

Instrument Summary:

Instrument ID: iCAP Q
Serial Number: Undefined

Labbook Summary:

Path and filename: _Application Data\Workspace\LabBooks\wlw\20210901-1.imexp
Labbook created by: Administrator
Based on template:
Hardware configuration: iCAPQ1
Labbook type: eQuant
Qtegra version (last saved): 2.7.2425.154
Labbook started: 9/1/2021 3:47:06 PM
Labbook finished: 9/1/2021 5:14:16 PM

Method Summary:

Isotope	Mode	Dwell time (s)	# of Channels	Spacing	Resolution	IS
9Be (KED)	KED	0.03	3	0.1	Normal	
11B (KED)	KED	0.03	3	0.1	Normal	
24Mg (KED)	KED	0.03	3	0.1	Normal	
27Al (KED)	KED	0.03	3	0.1	Normal	
51V (KED)	KED	0.03	3	0.1	Normal	
52Cr (KED)	KED	0.03	3	0.1	Normal	
55Mn (KED)	KED	0.03	3	0.1	Normal	
56Fe (KED)	KED	0.03	3	0.1	Normal	
58Ni (KED)	KED	0.03	3	0.1	Normal	
59Co (KED)	KED	0.03	3	0.1	Normal	
63Cu (KED)	KED	0.03	3	0.1	Normal	
64Zn (KED)	KED	0.03	3	0.1	Normal	
69Ga (KED)	KED	0.03	3	0.1	Normal	
75As (KED)	KED	0.03	3	0.1	Normal	
80Se (KED)	KED	0.03	3	0.1	Normal	
85Rb (KED)	KED	0.03	3	0.1	Normal	
88Sr (KED)	KED	0.03	3	0.1	Normal	
107Ag (KED)	KED	0.03	3	0.1	Normal	
114Cd (KED)	KED	0.03	3	0.1	Normal	
133Cs (KED)	KED	0.03	3	0.1	Normal	
138Ba (KED)	KED	0.03	3	0.1	Normal	
139La (KED)	KED	0.03	3	0.1	Normal	
140Ce (KED)	KED	0.03	3	0.1	Normal	
141Pr (KED)	KED	0.03	3	0.1	Normal	
142Nd (KED)	KED	0.03	3	0.1	Normal	
152Sm (KED)	KED	0.03	3	0.1	Normal	
153Eu (KED)	KED	0.03	3	0.1	Normal	
158Gd (KED)	KED	0.03	3	0.1	Normal	
164Dy (KED)	KED	0.03	3	0.1	Normal	
165Ho (KED)	KED	0.03	3	0.1	Normal	
166Er (KED)	KED	0.03	3	0.1	Normal	
169Tm (KED)	KED	0.03	3	0.1	Normal	
174Yb (KED)	KED	0.03	3	0.1	Normal	
175Lu (KED)	KED	0.03	3	0.1	Normal	
205Tl (KED)	KED	0.03	3	0.1	Normal	
208Pb (KED)	KED	0.03	3	0.1	Normal	
232Th (KED)	KED	0.03	3	0.1	Normal	
238U (KED)	KED	0.03	3	0.1	Normal	

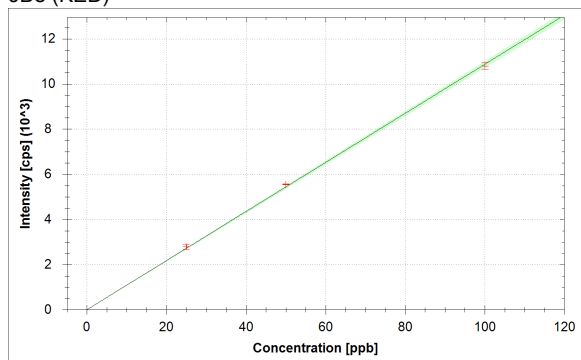
Isotope	Mode	Dwell time (s)	# of Channels	Spacing	Resolution
9Be (KED)	KED	0.03	3	0.1	Normal
11B (KED)	KED	0.03	3	0.1	Normal
24Mg (KED)	KED	0.03	3	0.1	Normal
27Al (KED)	KED	0.03	3	0.1	Normal
51V (KED)	KED	0.03	3	0.1	Normal
52Cr (KED)	KED	0.03	3	0.1	Normal
55Mn (KED)	KED	0.03	3	0.1	Normal
56Fe (KED)	KED	0.03	3	0.1	Normal
58Ni (KED)	KED	0.03	3	0.1	Normal
59Co (KED)	KED	0.03	3	0.1	Normal
63Cu (KED)	KED	0.03	3	0.1	Normal
64Zn (KED)	KED	0.03	3	0.1	Normal
69Ga (KED)	KED	0.03	3	0.1	Normal
75As (KED)	KED	0.03	3	0.1	Normal
80Se (KED)	KED	0.03	3	0.1	Normal
85Rb (KED)	KED	0.03	3	0.1	Normal
88Sr (KED)	KED	0.03	3	0.1	Normal

Isotope	Mode	Dwell time (s)	# of Channels	Spacing	Resolution
107Ag (KED)	KED	0.03	3	0.1	Normal
114Cd (KED)	KED	0.03	3	0.1	Normal
133Cs (KED)	KED	0.03	3	0.1	Normal
138Ba (KED)	KED	0.03	3	0.1	Normal
139La (KED)	KED	0.03	3	0.1	Normal
140Ce (KED)	KED	0.03	3	0.1	Normal
141Pr (KED)	KED	0.03	3	0.1	Normal
142Nd (KED)	KED	0.03	3	0.1	Normal
152Sm (KED)	KED	0.03	3	0.1	Normal
153Eu (KED)	KED	0.03	3	0.1	Normal
158Gd (KED)	KED	0.03	3	0.1	Normal
164Dy (KED)	KED	0.03	3	0.1	Normal
165Ho (KED)	KED	0.03	3	0.1	Normal
166Er (KED)	KED	0.03	3	0.1	Normal
169Tm (KED)	KED	0.03	3	0.1	Normal
174Yb (KED)	KED	0.03	3	0.1	Normal
175Lu (KED)	KED	0.03	3	0.1	Normal
205Tl (KED)	KED	0.03	3	0.1	Normal
208Pb (KED)	KED	0.03	3	0.1	Normal
232Th (KED)	KED	0.03	3	0.1	Normal
238U (KED)	KED	0.03	3	0.1	Normal

No. of sweeps	Time per sweep[s]	Time per main run[s]
10	3.42	34.2

Calibration Curves:

9Be (KED)



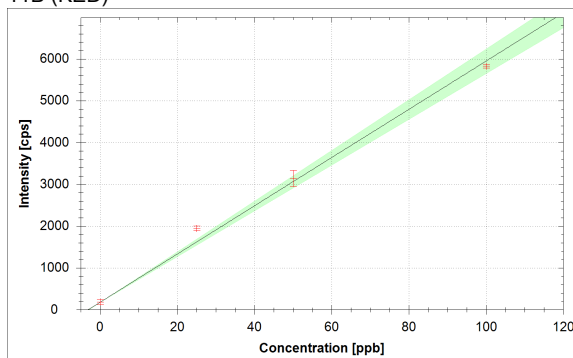
$$f(x) = 108.6843 \cdot x + 1.1111$$

$$R^2 = 0.9996$$

$$\text{BEC} = 0.010 \text{ ppb}$$

$$\text{LoD} = 0.0531 \text{ ppb}$$

11B (KED)



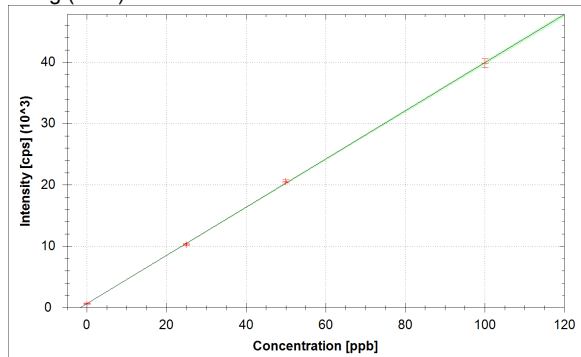
$$f(x) = 57.6693 \cdot x + 180.0022$$

$$R^2 = 0.9925$$

$$\text{BEC} = 3.121 \text{ ppb}$$

$$\text{LoD} = 3.1549 \text{ ppb}$$

24Mg (KED)



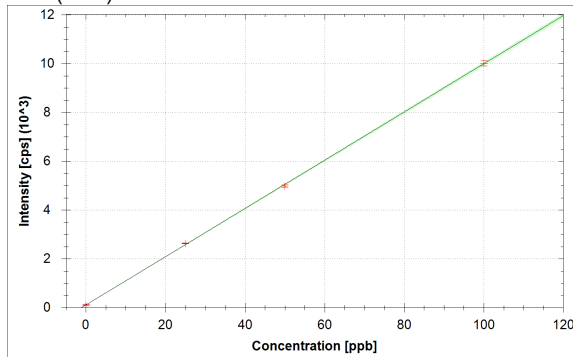
$$f(x) = 392.7357 \cdot x + 641.1292$$

$$R^2 = 0.9999$$

$$\text{BEC} = 1.632 \text{ ppb}$$

$$\text{LoD} = 0.8618 \text{ ppb}$$

27Al (KED)



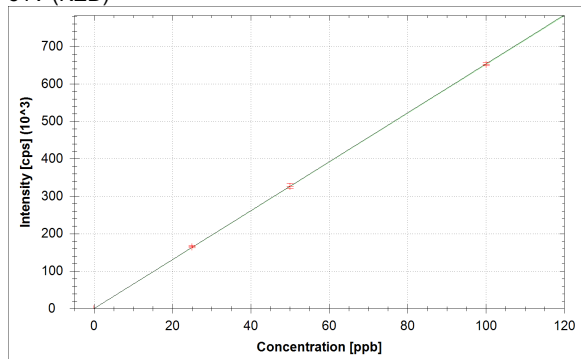
$$f(x) = 98.8540 \cdot x + 107.7784$$

$$R^2 = 0.9998$$

$$\text{BEC} = 1.090 \text{ ppb}$$

$$\text{LoD} = 0.7177 \text{ ppb}$$

51V (KED)



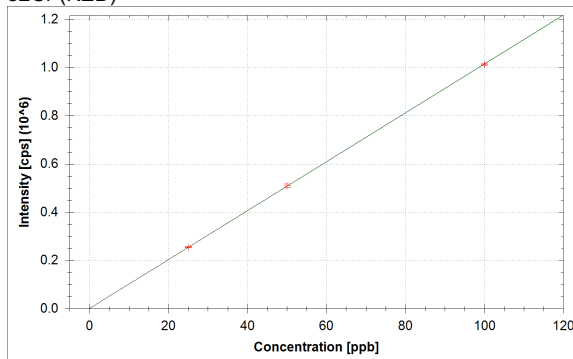
$$f(x) = 6530.2349 \cdot x + 10.0000$$

$$R^2 = 1.0000$$

$$\text{BEC} = 0.002 \text{ ppb}$$

$$\text{LoD} = 0.0041 \text{ ppb}$$

52Cr (KED)



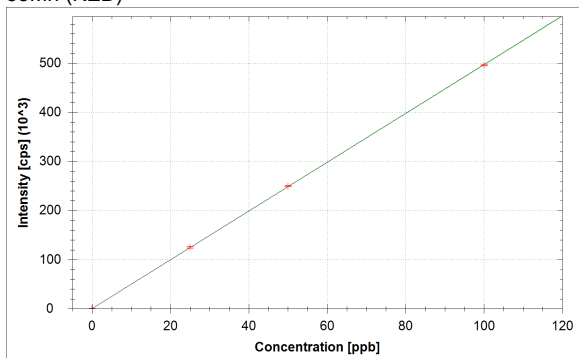
$$f(x) = 10141.9696 \cdot x + 256.6698$$

$$R^2 = 1.0000$$

$$\text{BEC} = 0.025 \text{ ppb}$$

$$\text{LoD} = 0.0088 \text{ ppb}$$

55Mn (KED)



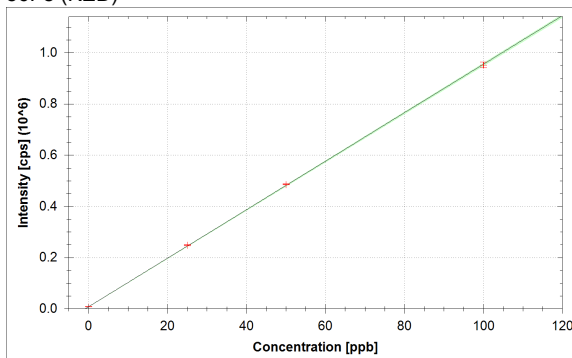
$$f(x) = 4967.0963 \cdot x + 238.8915$$

$$R^2 = 1.0000$$

$$\text{BEC} = 0.048 \text{ ppb}$$

$$\text{LoD} = 0.0176 \text{ ppb}$$

56Fe (KED)



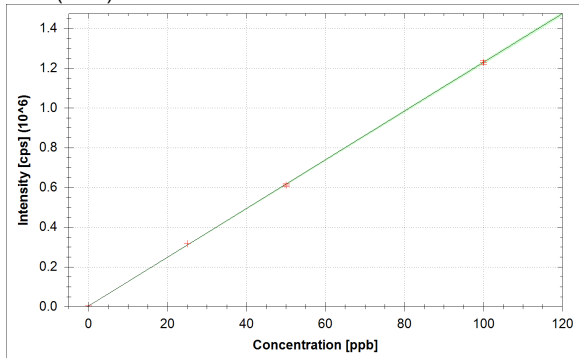
$$f(x) = 9471.8537 \cdot x + 7665.6995$$

$$R^2 = 0.9999$$

$$\text{BEC} = 0.809 \text{ ppb}$$

$$\text{LoD} = 0.0840 \text{ ppb}$$

58Ni (KED)



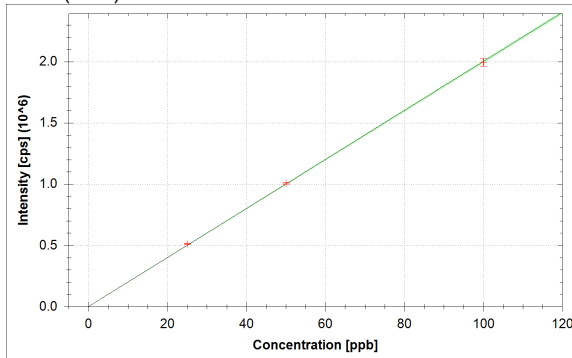
$$f(x) = 12260.6982 \cdot x + 2923.6791$$

$$R^2 = 0.9999$$

$$\text{BEC} = 0.238 \text{ ppb}$$

$$\text{LoD} = 0.0185 \text{ ppb}$$

59Co (KED)



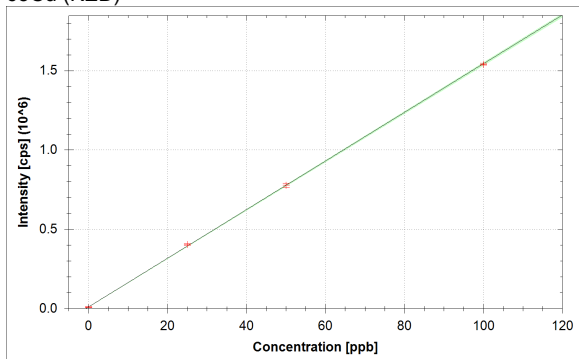
$$f(x) = 20014.0107 \cdot x + 16.6667$$

$$R^2 = 0.9999$$

$$\text{BEC} = 0.001 \text{ ppb}$$

$$\text{LoD} = 0.0005 \text{ ppb}$$

63Cu (KED)



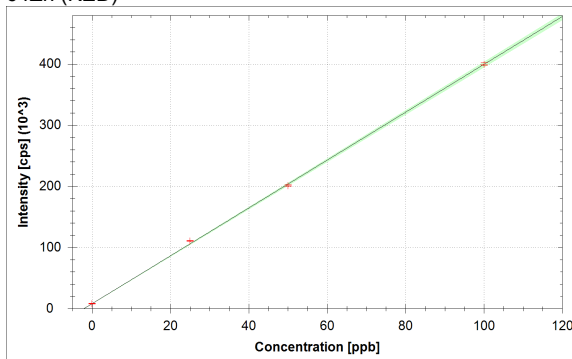
$$f(x) = 15327.7277 \cdot x + 10093.3970$$

$$R^2 = 0.9999$$

$$\text{BEC} = 0.659 \text{ ppb}$$

$$\text{LoD} = 0.6470 \text{ ppb}$$

64Zn (KED)



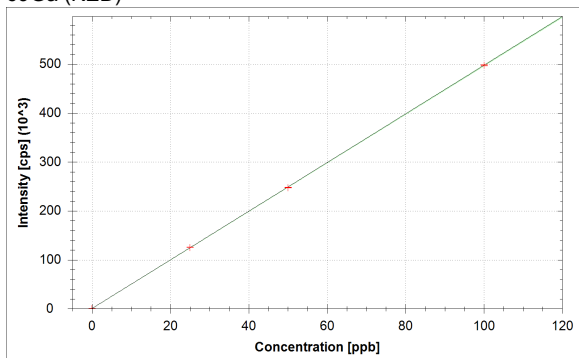
$$f(x) = 3914.4747 \cdot x + 8009.2539$$

$$R^2 = 0.9997$$

$$\text{BEC} = 2.046 \text{ ppb}$$

$$\text{LoD} = 0.3464 \text{ ppb}$$

69Ga (KED)



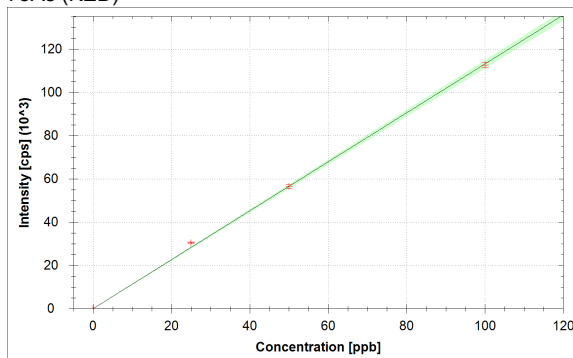
$$f(x) = 4971.0277 \cdot x + 491.1238$$

$$R^2 = 1.0000$$

$$\text{BEC} = 0.099 \text{ ppb}$$

$$\text{LoD} = 0.0493 \text{ ppb}$$

75As (KED)



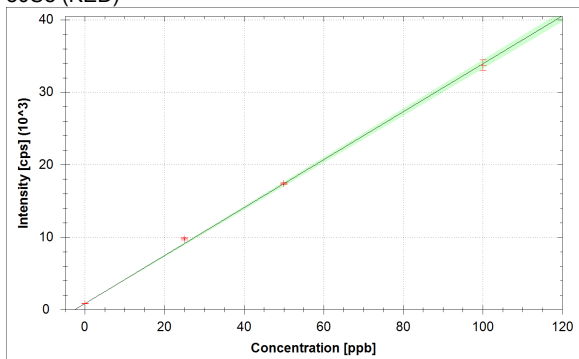
$$f(x) = 1131.8055 \cdot x + 31.1112$$

$$R^2 = 0.9993$$

$$\text{BEC} = 0.027 \text{ ppb}$$

$$\text{LoD} = 0.0051 \text{ ppb}$$

80Se (KED)



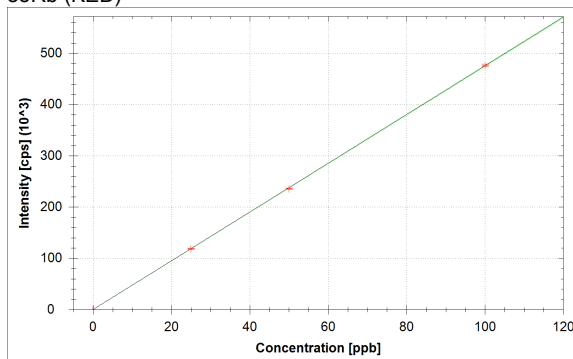
$$f(x) = 330.7985 \cdot x + 826.6956$$

$$R^2 = 0.9992$$

$$\text{BEC} = 2.499 \text{ ppb}$$

$$\text{LoD} = 0.1839 \text{ ppb}$$

85Rb (KED)



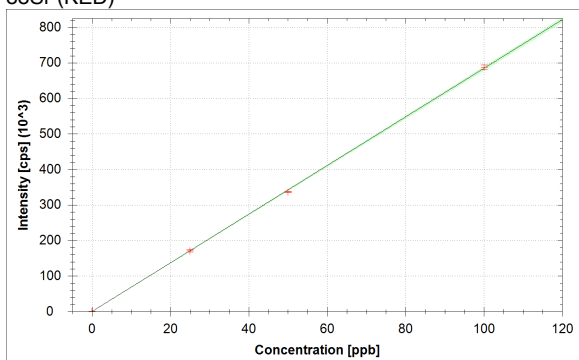
$$f(x) = 4754.0260 \cdot x + 77.7782$$

$$R^2 = 1.0000$$

$$\text{BEC} = 0.016 \text{ ppb}$$

$$\text{LoD} = 0.0191 \text{ ppb}$$

88Sr (KED)



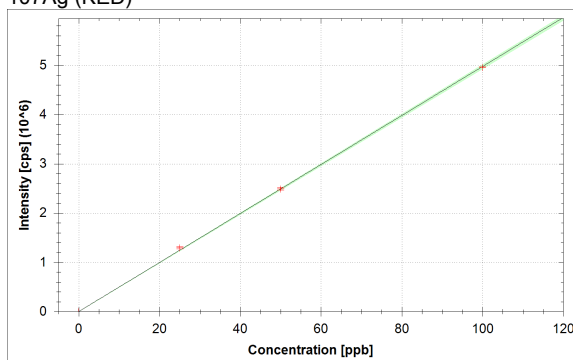
$$f(x) = 6843.0428 \cdot x + 280.0038$$

$$R^2 = 0.9998$$

$$\text{BEC} = 0.041 \text{ ppb}$$

$$\text{LoD} = 0.0279 \text{ ppb}$$

107Ag (KED)

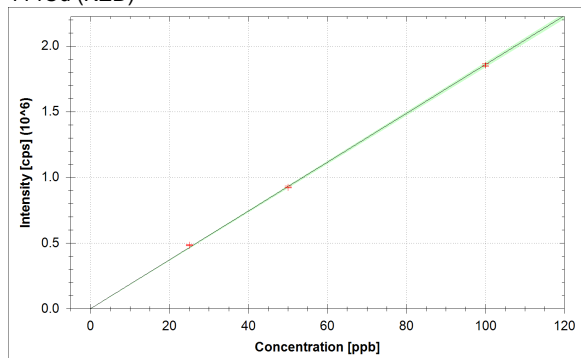


$$f(x) = 49743.8577 \cdot x + 533.3455$$

$$R^2 = 0.9998$$

$$\text{BEC} = 0.011 \text{ ppb}$$

$$\text{LoD} = 0.0019 \text{ ppb}$$

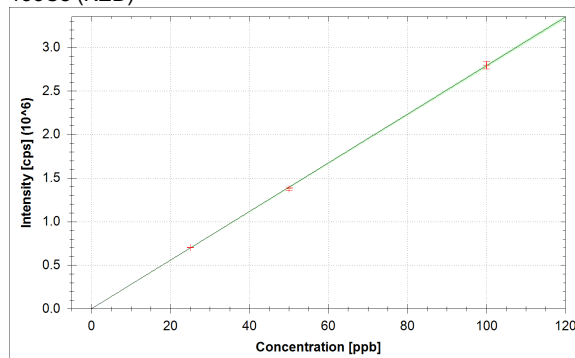
¹¹⁴Cd (KED)

$$f(x) = 18576.3307 \cdot x + 496.6770$$

$$R^2 = 0.9998$$

$$\text{BEC} = 0.027 \text{ ppb}$$

$$\text{LoD} = 0.0081 \text{ ppb}$$

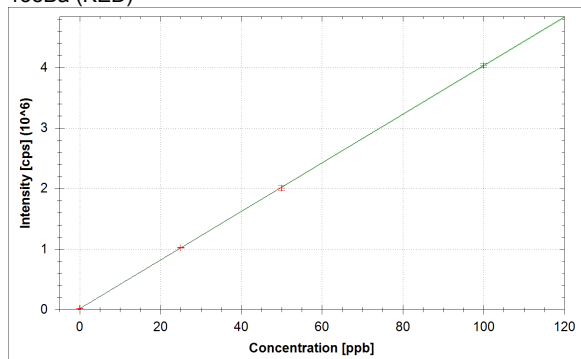
¹³³Cs (KED)

$$f(x) = 27885.8712 \cdot x + 20.0000$$

$$R^2 = 0.9999$$

$$\text{BEC} = 0.001 \text{ ppb}$$

$$\text{LoD} = 0.0004 \text{ ppb}$$

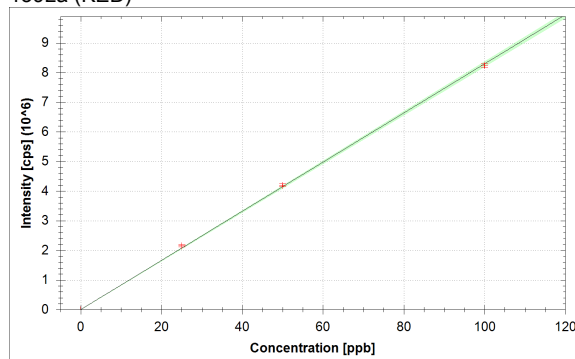
¹³⁸Ba (KED)

$$f(x) = 40167.7687 \cdot x + 15176.1651$$

$$R^2 = 1.0000$$

$$\text{BEC} = 0.378 \text{ ppb}$$

$$\text{LoD} = 0.1410 \text{ ppb}$$

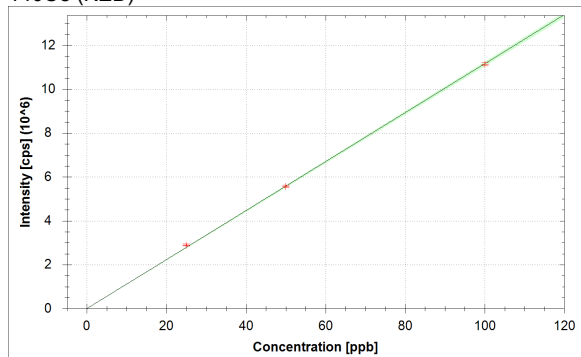
¹³⁹La (KED)

$$f(x) = 82925.0581 \cdot x + 52.2224$$

$$R^2 = 0.9997$$

$$\text{BEC} = 0.001 \text{ ppb}$$

$$\text{LoD} = 0.0004 \text{ ppb}$$

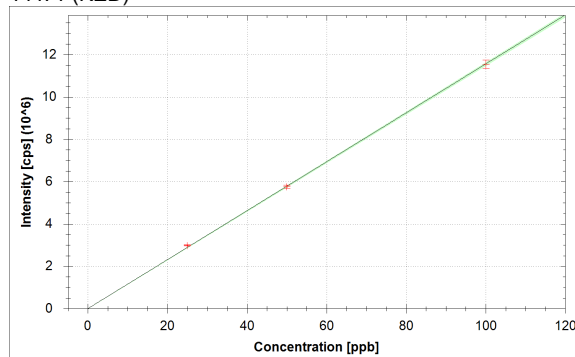
¹⁴⁰Ce (KED)

$$f(x) = 111589.0218 \cdot x + 161.1124$$

$$R^2 = 0.9998$$

$$\text{BEC} = 0.001 \text{ ppb}$$

$$\text{LoD} = 0.0005 \text{ ppb}$$

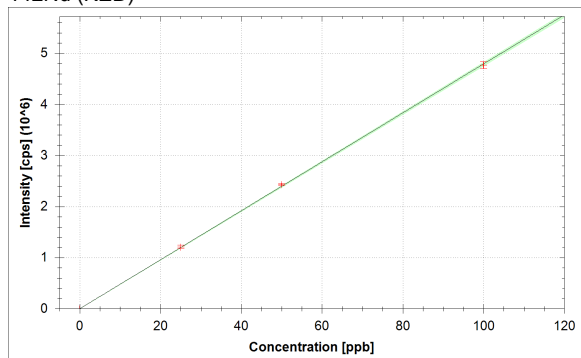
¹⁴¹Pr (KED)

$$f(x) = 115604.0274 \cdot x + 30.0001$$

$$R^2 = 0.9999$$

$$\text{BEC} = 0.000 \text{ ppb}$$

$$\text{LoD} = 0.0002 \text{ ppb}$$

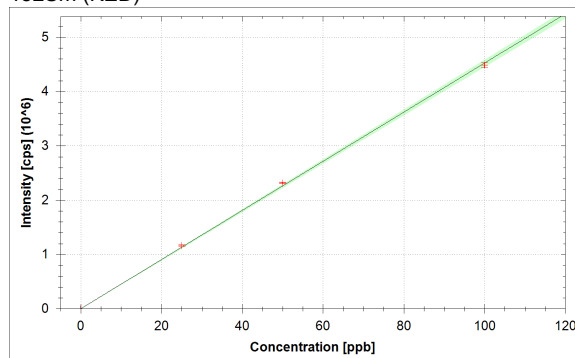
¹⁴²Nd (KED)

$$f(x) = 47919.5634 \cdot x + 52.2224$$

$$R^2 = 0.9998$$

$$\text{BEC} = 0.001 \text{ ppb}$$

$$\text{LoD} = 0.0010 \text{ ppb}$$

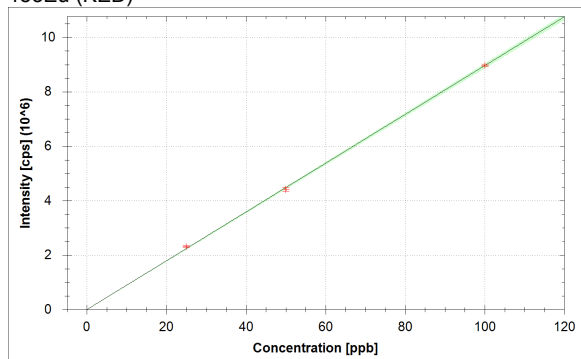
¹⁵²Sm (KED)

$$f(x) = 45241.9336 \cdot x + 14.4445$$

$$R^2 = 0.9995$$

$$\text{BEC} = 0.000 \text{ ppb}$$

$$\text{LoD} = 0.0005 \text{ ppb}$$

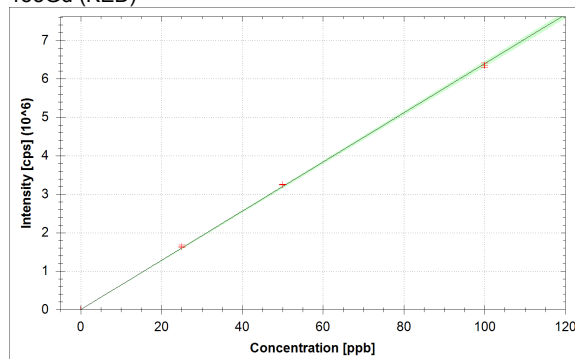
¹⁵³Eu (KED)

$$f(x) = 89615.0141 \cdot x + 21.1111$$

$$R^2 = 0.9998$$

$$\text{BEC} = 0.000 \text{ ppb}$$

$$\text{LoD} = 0.0003 \text{ ppb}$$

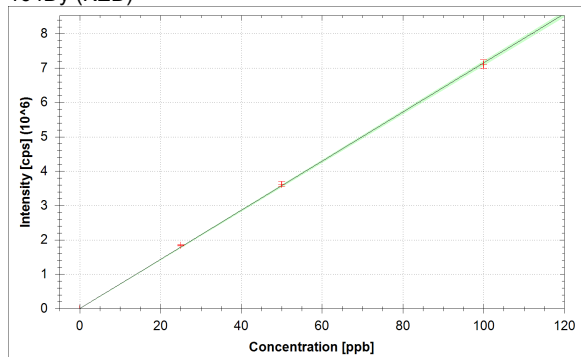
¹⁵⁸Gd (KED)

$$f(x) = 63922.7264 \cdot x + 12.2222$$

$$R^2 = 0.9997$$

$$\text{BEC} = 0.000 \text{ ppb}$$

$$\text{LoD} = 0.0003 \text{ ppb}$$

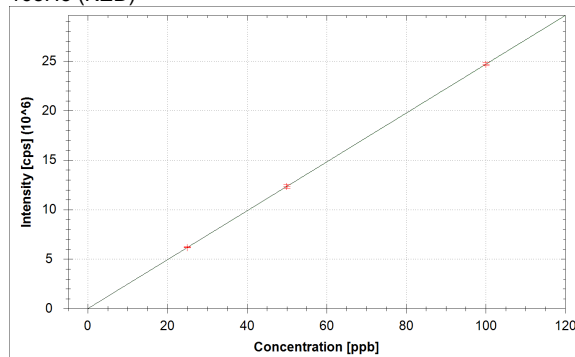
¹⁶⁴Dy (KED)

$$f(x) = 71469.8353 \cdot x + 15.5556$$

$$R^2 = 0.9998$$

$$\text{BEC} = 0.000 \text{ ppb}$$

$$\text{LoD} = 0.0003 \text{ ppb}$$

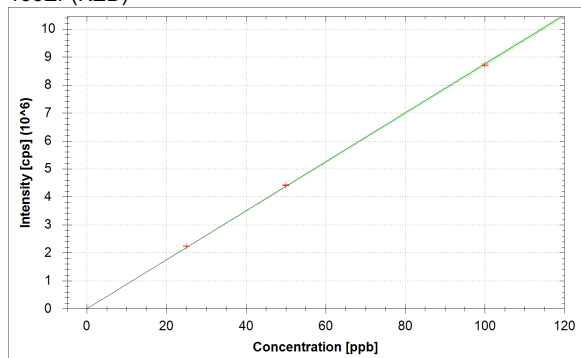
¹⁶⁵Ho (KED)

$$f(x) = 246918.6143 \cdot x + 10.0000$$

$$R^2 = 1.0000$$

$$\text{BEC} = 0.000 \text{ ppb}$$

$$\text{LoD} = 0.0000 \text{ ppb}$$

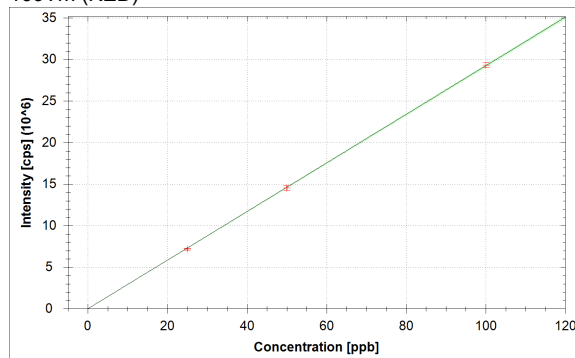
¹⁶⁶Er (KED)

$$f(x) = 87426.9531 \cdot x + 442.2345$$

$$R^2 = 0.9999$$

$$\text{BEC} = 0.005 \text{ ppb}$$

$$\text{LoD} = 0.0058 \text{ ppb}$$

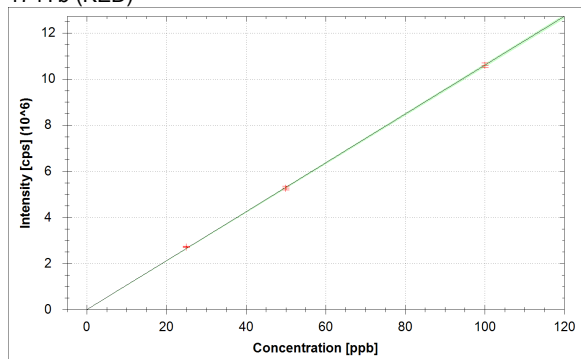
¹⁶⁹Tm (KED)

$$f(x) = 292499.0241 \cdot x + 21.1112$$

$$R^2 = 0.9999$$

$$\text{BEC} = 0.000 \text{ ppb}$$

$$\text{LoD} = 0.0001 \text{ ppb}$$

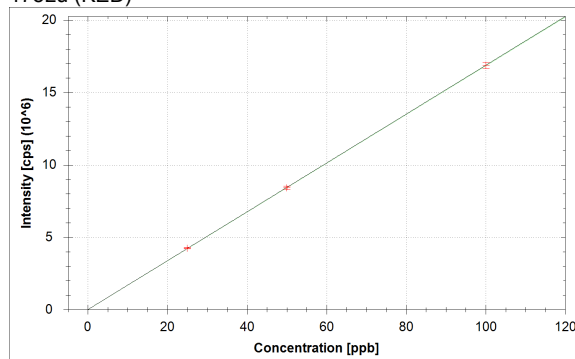
¹⁷⁴Yb (KED)

$$f(x) = 105991.3676 \cdot x + 7.7778$$

$$R^2 = 0.9999$$

$$\text{BEC} = 0.000 \text{ ppb}$$

$$\text{LoD} = 0.0001 \text{ ppb}$$

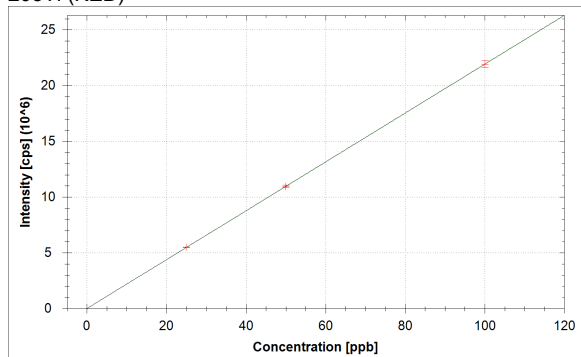
¹⁷⁵Lu (KED)

$$f(x) = 168768.4821 \cdot x + 7.7778$$

$$R^2 = 1.0000$$

$$\text{BEC} = 0.000 \text{ ppb}$$

$$\text{LoD} = 0.0001 \text{ ppb}$$

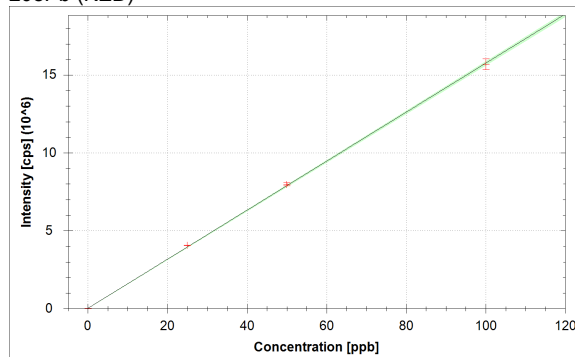
²⁰⁵Tl (KED)

$$f(x) = 219191.7743 \cdot x + 28.8889$$

$$R^2 = 1.0000$$

$$\text{BEC} = 0.000 \text{ ppb}$$

$$\text{LoD} = 0.0001 \text{ ppb}$$

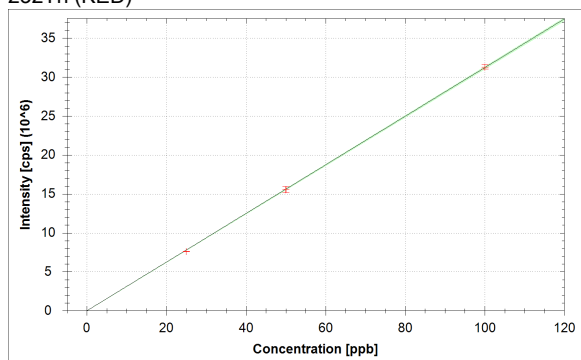
²⁰⁸Pb (KED)

$$f(x) = 157366.5372 \cdot x + 19736.7451$$

$$R^2 = 0.9998$$

$$\text{BEC} = 0.125 \text{ ppb}$$

$$\text{LoD} = 0.0061 \text{ ppb}$$

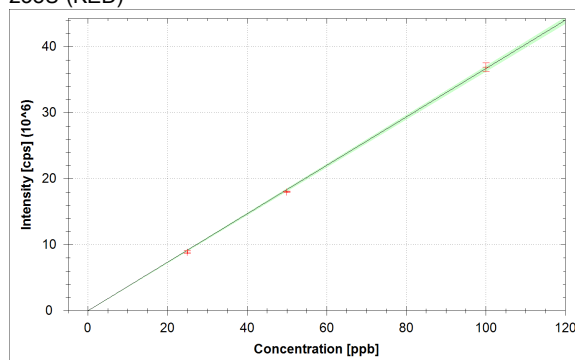
²³²Th (KED)

$$f(x) = 312175.6172 \cdot x + 1277.8456$$

$$R^2 = 0.9999$$

$$\text{BEC} = 0.004 \text{ ppb}$$

$$\text{LoD} = 0.0009 \text{ ppb}$$

²³⁸U (KED)

$$f(x) = 366730.8644 \cdot x + 166.6682$$

$$R^2 = 0.9997$$

$$\text{BEC} = 0.000 \text{ ppb}$$

$$\text{LoD} = 0.0003 \text{ ppb}$$

Standards:

Analysis Index: 3
 Analysis Name: std1
 Analysis Type: STD
 Analysis Started at: 9/1/2021 3:53:47 PM
 Standard (Stock): std1
 Standard DF: 1

Category	Concentration average	Concentration RSD	Standard Concentration
9Be (KED)	25.704 ppb	4.1 %	25.000 ppb
11B (KED)	30.656 ppb	2.8 %	25.000 ppb
24Mg (KED)	24.514 ppb	1.8 %	25.000 ppb
27Al (KED)	25.540 ppb	0.4 %	25.000 ppb
51V (KED)	25.275 ppb	1.7 %	25.000 ppb
52Cr (KED)	25.173 ppb	1.2 %	25.000 ppb
55Mn (KED)	25.167 ppb	1.4 %	25.000 ppb
56Fe (KED)	25.394 ppb	1.0 %	25.000 ppb
58Ni (KED)	25.627 ppb	0.2 %	25.000 ppb
59Co (KED)	25.600 ppb	0.9 %	25.000 ppb
63Cu (KED)	25.718 ppb	1.8 %	25.000 ppb
64Zn (KED)	26.152 ppb	1.1 %	25.000 ppb
69Ga (KED)	25.176 ppb	0.6 %	25.000 ppb
75As (KED)	26.848 ppb	1.2 %	25.000 ppb
80Se (KED)	27.027 ppb	1.8 %	25.000 ppb
85Rb (KED)	24.914 ppb	1.0 %	25.000 ppb
88Sr (KED)	24.899 ppb	1.7 %	25.000 ppb
107Ag (KED)	26.038 ppb	2.0 %	25.000 ppb
114Cd (KED)	26.092 ppb	1.2 %	25.000 ppb
133Cs (KED)	25.163 ppb	0.5 %	25.000 ppb
138Ba (KED)	25.079 ppb	0.8 %	25.000 ppb
139La (KED)	25.962 ppb	1.9 %	25.000 ppb
140Ce (KED)	25.964 ppb	1.3 %	25.000 ppb
141Pr (KED)	25.797 ppb	0.9 %	25.000 ppb
142Nd (KED)	25.269 ppb	2.7 %	25.000 ppb
152Sm (KED)	25.786 ppb	1.8 %	25.000 ppb
153Eu (KED)	25.834 ppb	1.0 %	25.000 ppb
158Gd (KED)	25.708 ppb	1.9 %	25.000 ppb
164Dy (KED)	25.765 ppb	1.2 %	25.000 ppb
165Ho (KED)	25.061 ppb	0.8 %	25.000 ppb
166Er (KED)	25.598 ppb	0.6 %	25.000 ppb
169Tm (KED)	24.523 ppb	1.8 %	25.000 ppb
174Yb (KED)	25.682 ppb	0.8 %	25.000 ppb
175Lu (KED)	25.181 ppb	1.3 %	25.000 ppb
205Tl (KED)	25.122 ppb	0.3 %	25.000 ppb
208Pb (KED)	25.679 ppb	0.3 %	25.000 ppb
232Th (KED)	24.386 ppb	0.4 %	25.000 ppb
238U (KED)	24.232 ppb	2.7 %	25.000 ppb

Standards:

Analysis Index: 4
 Analysis Name: std2
 Analysis Type: STD
 Analysis Started at: 9/1/2021 3:57:46 PM
 Standard (Stock): std2
 Standard DF: 1

Category	Concentration average	Concentration RSD	Standard Concentration
9Be (KED)	51.107 ppb	0.3 %	50.000 ppb
11B (KED)	51.334 ppb	6.6 %	50.000 ppb
24Mg (KED)	50.679 ppb	1.2 %	50.000 ppb
27Al (KED)	49.286 ppb	1.0 %	50.000 ppb
51V (KED)	50.049 ppb	2.1 %	50.000 ppb
52Cr (KED)	50.128 ppb	1.6 %	50.000 ppb
55Mn (KED)	50.279 ppb	0.6 %	50.000 ppb
56Fe (KED)	50.480 ppb	0.5 %	50.000 ppb
58Ni (KED)	49.571 ppb	1.2 %	50.000 ppb
59Co (KED)	50.323 ppb	0.8 %	50.000 ppb
63Cu (KED)	50.045 ppb	1.8 %	50.000 ppb
64Zn (KED)	49.319 ppb	1.0 %	50.000 ppb
69Ga (KED)	49.727 ppb	0.3 %	50.000 ppb
75As (KED)	49.990 ppb	1.6 %	50.000 ppb
80Se (KED)	50.094 ppb	0.8 %	50.000 ppb
85Rb (KED)	49.566 ppb	0.5 %	50.000 ppb
88Sr (KED)	49.187 ppb	0.7 %	50.000 ppb
107Ag (KED)	50.084 ppb	1.1 %	50.000 ppb
114Cd (KED)	49.850 ppb	0.7 %	50.000 ppb
133Cs (KED)	49.370 ppb	1.2 %	50.000 ppb
138Ba (KED)	49.586 ppb	1.9 %	50.000 ppb
139La (KED)	50.623 ppb	1.2 %	50.000 ppb
140Ce (KED)	49.973 ppb	0.9 %	50.000 ppb
141Pr (KED)	49.867 ppb	1.2 %	50.000 ppb
142Nd (KED)	50.795 ppb	0.9 %	50.000 ppb
152Sm (KED)	51.232 ppb	0.5 %	50.000 ppb
153Eu (KED)	49.276 ppb	1.6 %	50.000 ppb
158Gd (KED)	50.884 ppb	0.3 %	50.000 ppb
164Dy (KED)	50.630 ppb	2.0 %	50.000 ppb
165Ho (KED)	49.978 ppb	1.4 %	50.000 ppb
166Er (KED)	50.510 ppb	0.4 %	50.000 ppb
169Tm (KED)	49.689 ppb	1.9 %	50.000 ppb
174Yb (KED)	49.687 ppb	1.6 %	50.000 ppb
175Lu (KED)	49.849 ppb	1.4 %	50.000 ppb
205Tl (KED)	50.012 ppb	0.8 %	50.000 ppb
208Pb (KED)	50.533 ppb	1.1 %	50.000 ppb
232Th (KED)	49.870 ppb	2.5 %	50.000 ppb
238U (KED)	49.115 ppb	0.7 %	50.000 ppb

Standards:

Analysis Index: 5
 Analysis Name: std3
 Analysis Type: STD
 Analysis Started at: 9/1/2021 4:01:34 PM
 Standard (Stock): std3
 Standard DF: 1

Category	Concentration average	Concentration RSD	Standard Concentration
9Be (KED)	99.270 ppb	1.4 %	100.000 ppb
11B (KED)	97.919 ppb	0.8 %	100.000 ppb
24Mg (KED)	99.782 ppb	1.9 %	100.000 ppb
27Al (KED)	100.222 ppb	1.1 %	100.000 ppb
51V (KED)	99.907 ppb	0.7 %	100.000 ppb
52Cr (KED)	99.892 ppb	0.5 %	100.000 ppb
55Mn (KED)	99.819 ppb	0.3 %	100.000 ppb
56Fe (KED)	99.661 ppb	1.2 %	100.000 ppb
58Ni (KED)	100.058 ppb	0.8 %	100.000 ppb
59Co (KED)	99.689 ppb	1.6 %	100.000 ppb
63Cu (KED)	99.798 ppb	0.4 %	100.000 ppb
64Zn (KED)	100.053 ppb	0.6 %	100.000 ppb
69Ga (KED)	100.093 ppb	0.3 %	100.000 ppb
75As (KED)	99.543 ppb	1.1 %	100.000 ppb
80Se (KED)	99.446 ppb	2.3 %	100.000 ppb
85Rb (KED)	100.239 ppb	0.5 %	100.000 ppb
88Sr (KED)	100.432 ppb	1.0 %	100.000 ppb
107Ag (KED)	99.699 ppb	0.1 %	100.000 ppb
114Cd (KED)	99.802 ppb	0.7 %	100.000 ppb
133Cs (KED)	100.274 ppb	1.6 %	100.000 ppb
138Ba (KED)	100.187 ppb	0.8 %	100.000 ppb
139La (KED)	99.448 ppb	0.8 %	100.000 ppb
140Ce (KED)	99.772 ppb	0.6 %	100.000 ppb
141Pr (KED)	99.867 ppb	1.8 %	100.000 ppb
142Nd (KED)	99.535 ppb	1.4 %	100.000 ppb
152Sm (KED)	99.187 ppb	1.0 %	100.000 ppb
153Eu (KED)	100.154 ppb	0.5 %	100.000 ppb
158Gd (KED)	99.381 ppb	0.9 %	100.000 ppb
164Dy (KED)	99.494 ppb	1.8 %	100.000 ppb
165Ho (KED)	99.996 ppb	0.7 %	100.000 ppb
166Er (KED)	99.596 ppb	0.4 %	100.000 ppb
169Tm (KED)	100.275 ppb	0.9 %	100.000 ppb
174Yb (KED)	99.986 ppb	1.0 %	100.000 ppb
175Lu (KED)	100.030 ppb	1.2 %	100.000 ppb
205Tl (KED)	99.963 ppb	1.3 %	100.000 ppb
208Pb (KED)	99.564 ppb	2.2 %	100.000 ppb
232Th (KED)	100.218 ppb	0.9 %	100.000 ppb
238U (KED)	100.635 ppb	1.8 %	100.000 ppb

Sample List Summary:

Instrument ID: iCAP Q

Index:	Label:	Main Runs:	Survey Runs:	Start Time:	User name:
1	water	3	0	9/1/2021 3:47:12 PM	WINDOWS-UPCI4ER\Administrator
2	blk	3	0	9/1/2021 3:50:03 PM	WINDOWS-UPCI4ER\Administrator
3	std1	3	0	9/1/2021 3:53:47 PM	WINDOWS-UPCI4ER\Administrator
4	std2	3	0	9/1/2021 3:57:46 PM	WINDOWS-UPCI4ER\Administrator
5	std3	3	0	9/1/2021 4:01:34 PM	WINDOWS-UPCI4ER\Administrator
6	复测	3	0	9/1/2021 4:05:18 PM	WINDOWS-UPCI4ER\Administrator
7	290jian	3	0	9/1/2021 4:08:57 PM	WINDOWS-UPCI4ER\Administrator
8	179386jian	3	0	9/1/2021 4:12:27 PM	WINDOWS-UPCI4ER\Administrator
9	179420jian	3	0	9/1/2021 4:15:44 PM	WINDOWS-UPCI4ER\Administrator
10	179412jian	3	0	9/1/2021 4:19:05 PM	WINDOWS-UPCI4ER\Administrator
11	179348jian	3	0	9/1/2021 4:22:20 PM	WINDOWS-UPCI4ER\Administrator
12	179362jian	3	0	9/1/2021 4:25:41 PM	WINDOWS-UPCI4ER\Administrator
13	179402jian	3	0	9/1/2021 4:29:00 PM	WINDOWS-UPCI4ER\Administrator
14	179363jian	3	0	9/1/2021 4:32:31 PM	WINDOWS-UPCI4ER\Administrator
15	179401jian	3	0	9/1/2021 4:35:35 PM	WINDOWS-UPCI4ER\Administrator
16	179411jian	3	0	9/1/2021 4:38:43 PM	WINDOWS-UPCI4ER\Administrator
17	179409jian	3	0	9/1/2021 4:42:01 PM	WINDOWS-UPCI4ER\Administrator
18	634755jian	3	0	9/1/2021 4:45:23 PM	WINDOWS-UPCI4ER\Administrator
19	046681(178563)jian	3	0	9/1/2021 4:48:38 PM	WINDOWS-UPCI4ER\Administrator
20	027918(178637)jian	3	0	9/1/2021 4:51:50 PM	WINDOWS-UPCI4ER\Administrator
21	046377(178684)jian	3	0	9/1/2021 4:55:01 PM	WINDOWS-UPCI4ER\Administrator
22	046002(178603)jian	3	0	9/1/2021 4:58:17 PM	WINDOWS-UPCI4ER\Administrator
23	024066(178585)jian	3	0	9/1/2021 5:01:33 PM	WINDOWS-UPCI4ER\Administrator
24	015366(178647)jian	3	0	9/1/2021 5:04:50 PM	WINDOWS-UPCI4ER\Administrator
25	04380(178516)jian	3	0	9/1/2021 5:07:51 PM	WINDOWS-UPCI4ER\Administrator
26	034758(179419)jian	3	0	9/1/2021 5:11:01 PM	WINDOWS-UPCI4ER\Administrator

Sample Summary

Instrument ID: iCAP Q

Analysis index: 1

Analysis name: water

Analysis started at: 9/1/2021 3:47:12 PM

User name: WINDOWS-UPCI4ER\Administrator

Category	Concentration average	Concentration RSD
9Be (KED)	-0.010 ppb	0.0 %
11B (KED)	-3.063 ppb	1.9 %
24Mg (KED)	-1.474 ppb	1.2 %
27Al (KED)	-1.079 ppb	1.8 %
51V (KED)	-0.002 ppb	
52Cr (KED)	-0.022 ppb	7.0 %
55Mn (KED)	-0.025 ppb	22.5 %
56Fe (KED)	-0.788 ppb	0.3 %
58Ni (KED)	-0.093 ppb	9.8 %
59Co (KED)	-0.001 ppb	25.0 %
63Cu (KED)	-0.632 ppb	0.3 %
64Zn (KED)	-1.903 ppb	0.9 %
69Ga (KED)	-0.095 ppb	1.6 %
75As (KED)	-0.017 ppb	66.8 %
80Se (KED)	0.249 ppb	52.1 %
85Rb (KED)	-0.016 ppb	2.5 %
88Sr (KED)	-0.036 ppb	1.4 %
107Ag (KED)	-0.011 ppb	0.7 %
114Cd (KED)	-0.026 ppb	1.8 %
133Cs (KED)	-0.001 ppb	48.0 %
138Ba (KED)	-0.362 ppb	0.4 %
139La (KED)	-0.001 ppb	3.8 %
140Ce (KED)	-0.001 ppb	1.2 %
141Pr (KED)	0.000 ppb	0.0 %
142Nd (KED)	-0.001 ppb	3.8 %
152Sm (KED)	0.000 ppb	0.0 %
153Eu (KED)	0.000 ppb	0.0 %
158Gd (KED)	0.000 ppb	0.0 %
164Dy (KED)	0.000 ppb	0.0 %
165Ho (KED)	0.000 ppb	0.0 %
166Er (KED)	-0.005 ppb	0.4 %
169Tm (KED)	0.000 ppb	0.0 %
174Yb (KED)	0.000 ppb	0.0 %
175Lu (KED)	0.000 ppb	0.0 %
205Tl (KED)	0.000 ppb	300.0 %
208Pb (KED)	-0.124 ppb	0.1 %
232Th (KED)	-0.004 ppb	0.3 %
238U (KED)	0.000 ppb	2.0 %

Category	Concentration average	Intensity average	Intensity RSD
9Be (KED)	-0.010 ppb	0 cps	
11B (KED)	-3.063 ppb	3 cps	100.0 %
24Mg (KED)	-1.474 ppb	62 cps	11.2 %
27Al (KED)	-1.079 ppb	1 cps	173.2 %
51V (KED)	-0.002 ppb	0 cps	
52Cr (KED)	-0.022 ppb	36 cps	43.3 %
55Mn (KED)	-0.025 ppb	116 cps	24.0 %
56Fe (KED)	-0.788 ppb	199 cps	10.6 %
58Ni (KED)	-0.093 ppb	1,781 cps	6.3 %
59Co (KED)	-0.001 ppb	3 cps	100.0 %

Category	Concentration average	Intensity average	Intensity RSD
63Cu (KED)	-0.632 ppb	413 cps	6.5 %
64Zn (KED)	-1.903 ppb	561 cps	12.6 %
69Ga (KED)	-0.095 ppb	18 cps	43.3 %
75As (KED)	-0.017 ppb	12 cps	103.3 %
80Se (KED)	0.249 ppb	909 cps	4.7 %
85Rb (KED)	-0.016 ppb	2 cps	86.6 %
88Sr (KED)	-0.036 ppb	37 cps	9.1 %
107Ag (KED)	-0.011 ppb	4 cps	86.6 %
114Cd (KED)	-0.026 ppb	10 cps	88.2 %
133Cs (KED)	-0.001 ppb	6 cps	124.9 %
138Ba (KED)	-0.362 ppb	646 cps	8.4 %
139La (KED)	-0.001 ppb	1 cps	173.2 %
140Ce (KED)	-0.001 ppb	4 cps	43.3 %
141Pr (KED)	0.000 ppb	0 cps	
142Nd (KED)	-0.001 ppb	2 cps	86.6 %
152Sm (KED)	0.000 ppb	0 cps	
153Eu (KED)	0.000 ppb	0 cps	
158Gd (KED)	0.000 ppb	0 cps	
164Dy (KED)	0.000 ppb	0 cps	
165Ho (KED)	0.000 ppb	0 cps	
166Er (KED)	-0.005 ppb	1 cps	173.2 %
169Tm (KED)	0.000 ppb	0 cps	
174Yb (KED)	0.000 ppb	0 cps	
175Lu (KED)	0.000 ppb	0 cps	
205Tl (KED)	0.000 ppb	33 cps	40.0 %
208Pb (KED)	-0.124 ppb	286 cps	5.9 %
232Th (KED)	-0.004 ppb	4 cps	86.6 %
238U (KED)	0.000 ppb	3 cps	100.0 %

Sample Summary

Instrument ID: iCAP Q

Analysis index: 2

Analysis name: blk

Analysis started at: 9/1/2021 3:50:03 PM

User name: WINDOWS-UPCI4ER\Administrator

Category	Concentration average	Concentration RSD
9Be (KED)	0.000 ppb	173.2 %
11B (KED)	0.000 ppb	33.7 %
24Mg (KED)	0.000 ppb	17.6 %
27Al (KED)	0.000 ppb	21.9 %
51V (KED)	0.000 ppb	88.2 %
52Cr (KED)	0.000 ppb	11.5 %
55Mn (KED)	0.000 ppb	12.2 %
56Fe (KED)	0.000 ppb	3.5 %
58Ni (KED)	0.000 ppb	2.6 %
59Co (KED)	0.000 ppb	20.0 %
63Cu (KED)	0.000 ppb	32.7 %
64Zn (KED)	0.000 ppb	5.6 %
69Ga (KED)	0.000 ppb	16.6 %
75As (KED)	0.000 ppb	6.2 %
80Se (KED)	0.000 ppb	2.5 %
85Rb (KED)	0.000 ppb	38.9 %
88Sr (KED)	0.000 ppb	22.7 %
107Ag (KED)	0.000 ppb	6.0 %
114Cd (KED)	0.000 ppb	10.1 %
133Cs (KED)	0.000 ppb	16.7 %
138Ba (KED)	0.000 ppb	12.4 %
139La (KED)	0.000 ppb	22.4 %
140Ce (KED)	0.000 ppb	10.4 %
141Pr (KED)	0.000 ppb	22.2 %
142Nd (KED)	0.000 ppb	29.5 %
152Sm (KED)	0.000 ppb	48.0 %
153Eu (KED)	0.000 ppb	36.5 %
158Gd (KED)	0.000 ppb	56.8 %
164Dy (KED)	0.000 ppb	44.6 %
165Ho (KED)	0.000 ppb	33.3 %
166Er (KED)	0.000 ppb	37.9 %
169Tm (KED)	0.000 ppb	36.5 %
174Yb (KED)	0.000 ppb	49.5 %
175Lu (KED)	0.000 ppb	89.2 %
205Tl (KED)	0.000 ppb	26.6 %
208Pb (KED)	0.000 ppb	1.6 %
232Th (KED)	0.000 ppb	7.3 %
238U (KED)	0.000 ppb	20.8 %

Category	Concentration average	Intensity average	Intensity RSD
9Be (KED)	0.000 ppb	1 cps	173.2 %
11B (KED)	0.000 ppb	180 cps	33.7 %
24Mg (KED)	0.000 ppb	641 cps	17.6 %
27Al (KED)	0.000 ppb	108 cps	21.9 %
51V (KED)	0.000 ppb	10 cps	88.2 %
52Cr (KED)	0.000 ppb	257 cps	11.5 %
55Mn (KED)	0.000 ppb	239 cps	12.2 %
56Fe (KED)	0.000 ppb	7,666 cps	3.5 %
58Ni (KED)	0.000 ppb	2,924 cps	2.6 %
59Co (KED)	0.000 ppb	17 cps	20.0 %

Category	Concentration average	Intensity average	Intensity RSD
63Cu (KED)	0.000 ppb	10,093 cps	32.7 %
64Zn (KED)	0.000 ppb	8,009 cps	5.6 %
69Ga (KED)	0.000 ppb	491 cps	16.6 %
75As (KED)	0.000 ppb	31 cps	6.2 %
80Se (KED)	0.000 ppb	827 cps	2.5 %
85Rb (KED)	0.000 ppb	78 cps	38.9 %
88Sr (KED)	0.000 ppb	280 cps	22.7 %
107Ag (KED)	0.000 ppb	533 cps	6.0 %
114Cd (KED)	0.000 ppb	497 cps	10.1 %
133Cs (KED)	0.000 ppb	20 cps	16.7 %
138Ba (KED)	0.000 ppb	15,176 cps	12.4 %
139La (KED)	0.000 ppb	52 cps	22.4 %
140Ce (KED)	0.000 ppb	161 cps	10.4 %
141Pr (KED)	0.000 ppb	30 cps	22.2 %
142Nd (KED)	0.000 ppb	52 cps	29.5 %
152Sm (KED)	0.000 ppb	14 cps	48.0 %
153Eu (KED)	0.000 ppb	21 cps	36.5 %
158Gd (KED)	0.000 ppb	12 cps	56.8 %
164Dy (KED)	0.000 ppb	16 cps	44.6 %
165Ho (KED)	0.000 ppb	10 cps	33.3 %
166Er (KED)	0.000 ppb	442 cps	37.9 %
169Tm (KED)	0.000 ppb	21 cps	36.5 %
174Yb (KED)	0.000 ppb	8 cps	49.5 %
175Lu (KED)	0.000 ppb	8 cps	89.2 %
205Tl (KED)	0.000 ppb	29 cps	26.6 %
208Pb (KED)	0.000 ppb	19,737 cps	1.6 %
232Th (KED)	0.000 ppb	1,278 cps	7.3 %
238U (KED)	0.000 ppb	167 cps	20.8 %

Sample Summary

Instrument ID: iCAP Q

Analysis index: 3

Analysis name: std1

Analysis started at: 9/1/2021 3:53:47 PM

User name: WINDOWS-UPCI4ER\Administrator

Category	Concentration average	Concentration RSD
9Be (KED)	25.704 ppb	4.1 %
11B (KED)	30.656 ppb	2.8 %
24Mg (KED)	24.514 ppb	1.8 %
27Al (KED)	25.540 ppb	0.4 %
51V (KED)	25.275 ppb	1.7 %
52Cr (KED)	25.173 ppb	1.2 %
55Mn (KED)	25.167 ppb	1.4 %
56Fe (KED)	25.394 ppb	1.0 %
58Ni (KED)	25.627 ppb	0.2 %
59Co (KED)	25.600 ppb	0.9 %
63Cu (KED)	25.718 ppb	1.8 %
64Zn (KED)	26.152 ppb	1.1 %
69Ga (KED)	25.176 ppb	0.6 %
75As (KED)	26.848 ppb	1.2 %
80Se (KED)	27.027 ppb	1.8 %
85Rb (KED)	24.914 ppb	1.0 %
88Sr (KED)	24.899 ppb	1.7 %
107Ag (KED)	26.038 ppb	2.0 %
114Cd (KED)	26.092 ppb	1.2 %
133Cs (KED)	25.163 ppb	0.5 %
138Ba (KED)	25.079 ppb	0.8 %
139La (KED)	25.962 ppb	1.9 %
140Ce (KED)	25.964 ppb	1.3 %
141Pr (KED)	25.797 ppb	0.9 %
142Nd (KED)	25.269 ppb	2.7 %
152Sm (KED)	25.786 ppb	1.8 %
153Eu (KED)	25.834 ppb	1.0 %
158Gd (KED)	25.708 ppb	1.9 %
164Dy (KED)	25.765 ppb	1.2 %
165Ho (KED)	25.061 ppb	0.8 %
166Er (KED)	25.598 ppb	0.6 %
169Tm (KED)	24.523 ppb	1.8 %
174Yb (KED)	25.682 ppb	0.8 %
175Lu (KED)	25.181 ppb	1.3 %
205Tl (KED)	25.122 ppb	0.3 %
208Pb (KED)	25.679 ppb	0.3 %
232Th (KED)	24.386 ppb	0.4 %
238U (KED)	24.232 ppb	2.7 %

Category	Concentration average	Intensity average	Intensity RSD
9Be (KED)	25.704 ppb	2,795 cps	4.1 %
11B (KED)	30.656 ppb	1,948 cps	2.5 %
24Mg (KED)	24.514 ppb	10,269 cps	1.7 %
27Al (KED)	25.540 ppb	2,633 cps	0.4 %
51V (KED)	25.275 ppb	165,058 cps	1.7 %
52Cr (KED)	25.173 ppb	255,566 cps	1.2 %
55Mn (KED)	25.167 ppb	125,244 cps	1.4 %
56Fe (KED)	25.394 ppb	248,196 cps	1.0 %
58Ni (KED)	25.627 ppb	317,132 cps	0.2 %
59Co (KED)	25.600 ppb	512,382 cps	0.9 %

Category	Concentration average	Intensity average	Intensity RSD
63Cu (KED)	25.718 ppb	404,289 cps	1.7 %
64Zn (KED)	26.152 ppb	110,379 cps	1.0 %
69Ga (KED)	25.176 ppb	125,640 cps	0.6 %
75As (KED)	26.848 ppb	30,418 cps	1.2 %
80Se (KED)	27.027 ppb	9,767 cps	1.7 %
85Rb (KED)	24.914 ppb	118,522 cps	1.0 %
88Sr (KED)	24.899 ppb	170,664 cps	1.7 %
107Ag (KED)	26.038 ppb	1,295,766 cps	2.0 %
114Cd (KED)	26.092 ppb	485,191 cps	1.2 %
133Cs (KED)	25.163 ppb	701,698 cps	0.5 %
138Ba (KED)	25.079 ppb	1,022,557 cps	0.8 %
139La (KED)	25.962 ppb	2,152,949 cps	1.9 %
140Ce (KED)	25.964 ppb	2,897,418 cps	1.3 %
141Pr (KED)	25.797 ppb	2,982,288 cps	0.9 %
142Nd (KED)	25.269 ppb	1,210,908 cps	2.7 %
152Sm (KED)	25.786 ppb	1,166,605 cps	1.8 %
153Eu (KED)	25.834 ppb	2,315,144 cps	1.0 %
158Gd (KED)	25.708 ppb	1,643,324 cps	1.9 %
164Dy (KED)	25.765 ppb	1,841,441 cps	1.2 %
165Ho (KED)	25.061 ppb	6,188,092 cps	0.8 %
166Er (KED)	25.598 ppb	2,238,356 cps	0.6 %
169Tm (KED)	24.523 ppb	7,172,938 cps	1.8 %
174Yb (KED)	25.682 ppb	2,722,081 cps	0.8 %
175Lu (KED)	25.181 ppb	4,249,810 cps	1.3 %
205Tl (KED)	25.122 ppb	5,506,557 cps	0.3 %
208Pb (KED)	25.679 ppb	4,060,725 cps	0.3 %
232Th (KED)	24.386 ppb	7,614,117 cps	0.4 %
238U (KED)	24.232 ppb	8,886,699 cps	2.7 %

Sample Summary

Instrument ID: iCAP Q

Analysis index: 4

Analysis name: std2

Analysis started at: 9/1/2021 3:57:46 PM

User name: WINDOWS-UPCI4ER\Administrator

Category	Concentration average	Concentration RSD
9Be (KED)	51.107 ppb	0.3 %
11B (KED)	51.334 ppb	6.6 %
24Mg (KED)	50.679 ppb	1.2 %
27Al (KED)	49.286 ppb	1.0 %
51V (KED)	50.049 ppb	2.1 %
52Cr (KED)	50.128 ppb	1.6 %
55Mn (KED)	50.279 ppb	0.6 %
56Fe (KED)	50.480 ppb	0.5 %
58Ni (KED)	49.571 ppb	1.2 %
59Co (KED)	50.323 ppb	0.8 %
63Cu (KED)	50.045 ppb	1.8 %
64Zn (KED)	49.319 ppb	1.0 %
69Ga (KED)	49.727 ppb	0.3 %
75As (KED)	49.990 ppb	1.6 %
80Se (KED)	50.094 ppb	0.8 %
85Rb (KED)	49.566 ppb	0.5 %
88Sr (KED)	49.187 ppb	0.7 %
107Ag (KED)	50.084 ppb	1.1 %
114Cd (KED)	49.850 ppb	0.7 %
133Cs (KED)	49.370 ppb	1.2 %
138Ba (KED)	49.586 ppb	1.9 %
139La (KED)	50.623 ppb	1.2 %
140Ce (KED)	49.973 ppb	0.9 %
141Pr (KED)	49.867 ppb	1.2 %
142Nd (KED)	50.795 ppb	0.9 %
152Sm (KED)	51.232 ppb	0.5 %
153Eu (KED)	49.276 ppb	1.6 %
158Gd (KED)	50.884 ppb	0.3 %
164Dy (KED)	50.630 ppb	2.0 %
165Ho (KED)	49.978 ppb	1.4 %
166Er (KED)	50.510 ppb	0.4 %
169Tm (KED)	49.689 ppb	1.9 %
174Yb (KED)	49.687 ppb	1.6 %
175Lu (KED)	49.849 ppb	1.4 %
205Tl (KED)	50.012 ppb	0.8 %
208Pb (KED)	50.533 ppb	1.1 %
232Th (KED)	49.870 ppb	2.5 %
238U (KED)	49.115 ppb	0.7 %

Category	Concentration average	Intensity average	Intensity RSD
9Be (KED)	51.107 ppb	5,556 cps	0.3 %
11B (KED)	51.334 ppb	3,140 cps	6.2 %
24Mg (KED)	50.679 ppb	20,545 cps	1.2 %
27Al (KED)	49.286 ppb	4,980 cps	1.0 %
51V (KED)	50.049 ppb	326,845 cps	2.1 %
52Cr (KED)	50.128 ppb	508,656 cps	1.6 %
55Mn (KED)	50.279 ppb	249,978 cps	0.6 %
56Fe (KED)	50.480 ppb	485,807 cps	0.5 %
58Ni (KED)	49.571 ppb	610,701 cps	1.2 %
59Co (KED)	50.323 ppb	1,007,173 cps	0.8 %

Category	Concentration average	Intensity average	Intensity RSD
63Cu (KED)	50.045 ppb	777,166 cps	1.8 %
64Zn (KED)	49.319 ppb	201,067 cps	1.0 %
69Ga (KED)	49.727 ppb	247,684 cps	0.3 %
75As (KED)	49.990 ppb	56,610 cps	1.6 %
80Se (KED)	50.094 ppb	17,398 cps	0.8 %
85Rb (KED)	49.566 ppb	235,714 cps	0.5 %
88Sr (KED)	49.187 ppb	336,872 cps	0.7 %
107Ag (KED)	50.084 ppb	2,491,901 cps	1.1 %
114Cd (KED)	49.850 ppb	926,529 cps	0.7 %
133Cs (KED)	49.370 ppb	1,376,744 cps	1.2 %
138Ba (KED)	49.586 ppb	2,006,924 cps	1.9 %
139La (KED)	50.623 ppb	4,197,955 cps	1.2 %
140Ce (KED)	49.973 ppb	5,576,620 cps	0.9 %
141Pr (KED)	49.867 ppb	5,764,802 cps	1.2 %
142Nd (KED)	50.795 ppb	2,434,123 cps	0.9 %
152Sm (KED)	51.232 ppb	2,317,869 cps	0.5 %
153Eu (KED)	49.276 ppb	4,415,848 cps	1.6 %
158Gd (KED)	50.884 ppb	3,252,635 cps	0.3 %
164Dy (KED)	50.630 ppb	3,618,527 cps	2.0 %
165Ho (KED)	49.978 ppb	12,340,460 cps	1.4 %
166Er (KED)	50.510 ppb	4,416,354 cps	0.4 %
169Tm (KED)	49.689 ppb	14,533,990 cps	1.9 %
174Yb (KED)	49.687 ppb	5,266,380 cps	1.6 %
175Lu (KED)	49.849 ppb	8,412,959 cps	1.4 %
205Tl (KED)	50.012 ppb	10,962,340 cps	0.8 %
208Pb (KED)	50.533 ppb	7,971,929 cps	1.1 %
232Th (KED)	49.870 ppb	15,569,554 cps	2.5 %
238U (KED)	49.115 ppb	18,012,084 cps	0.7 %

Sample Summary

Instrument ID: iCAP Q

Analysis index: 5

Analysis name: std3

Analysis started at: 9/1/2021 4:01:34 PM

User name: WINDOWS-UPCI4ER\Administrator

Category	Concentration average	Concentration RSD
9Be (KED)	99.270 ppb	1.4 %
11B (KED)	97.919 ppb	0.8 %
24Mg (KED)	99.782 ppb	1.9 %
27Al (KED)	100.222 ppb	1.1 %
51V (KED)	99.907 ppb	0.7 %
52Cr (KED)	99.892 ppb	0.5 %
55Mn (KED)	99.819 ppb	0.3 %
56Fe (KED)	99.661 ppb	1.2 %
58Ni (KED)	100.058 ppb	0.8 %
59Co (KED)	99.689 ppb	1.6 %
63Cu (KED)	99.798 ppb	0.4 %
64Zn (KED)	100.053 ppb	0.6 %
69Ga (KED)	100.093 ppb	0.3 %
75As (KED)	99.543 ppb	1.1 %
80Se (KED)	99.446 ppb	2.3 %
85Rb (KED)	100.239 ppb	0.5 %
88Sr (KED)	100.432 ppb	1.0 %
107Ag (KED)	99.699 ppb	0.1 %
114Cd (KED)	99.802 ppb	0.7 %
133Cs (KED)	100.274 ppb	1.6 %
138Ba (KED)	100.187 ppb	0.8 %
139La (KED)	99.448 ppb	0.8 %
140Ce (KED)	99.772 ppb	0.6 %
141Pr (KED)	99.867 ppb	1.8 %
142Nd (KED)	99.535 ppb	1.4 %
152Sm (KED)	99.187 ppb	1.0 %
153Eu (KED)	100.154 ppb	0.5 %
158Gd (KED)	99.381 ppb	0.9 %
164Dy (KED)	99.494 ppb	1.8 %
165Ho (KED)	99.996 ppb	0.7 %
166Er (KED)	99.596 ppb	0.4 %
169Tm (KED)	100.275 ppb	0.9 %
174Yb (KED)	99.986 ppb	1.0 %
175Lu (KED)	100.030 ppb	1.2 %
205Tl (KED)	99.963 ppb	1.3 %
208Pb (KED)	99.564 ppb	2.2 %
232Th (KED)	100.218 ppb	0.9 %
238U (KED)	100.635 ppb	1.8 %

Category	Concentration average	Intensity average	Intensity RSD
9Be (KED)	99.270 ppb	10,790 cps	1.4 %
11B (KED)	97.919 ppb	5,827 cps	0.8 %
24Mg (KED)	99.782 ppb	39,829 cps	1.8 %
27Al (KED)	100.222 ppb	10,015 cps	1.1 %
51V (KED)	99.907 ppb	652,424 cps	0.7 %
52Cr (KED)	99.892 ppb	1,013,363 cps	0.5 %
55Mn (KED)	99.819 ppb	496,050 cps	0.3 %
56Fe (KED)	99.661 ppb	951,643 cps	1.2 %
58Ni (KED)	100.058 ppb	1,229,700 cps	0.8 %
59Co (KED)	99.689 ppb	1,995,186 cps	1.6 %

Category	Concentration average	Intensity average	Intensity RSD
63Cu (KED)	99.798 ppb	1,539,772 cps	0.4 %
64Zn (KED)	100.053 ppb	399,663 cps	0.6 %
69Ga (KED)	100.093 ppb	498,055 cps	0.3 %
75As (KED)	99.543 ppb	112,694 cps	1.1 %
80Se (KED)	99.446 ppb	33,723 cps	2.2 %
85Rb (KED)	100.239 ppb	476,615 cps	0.5 %
88Sr (KED)	100.432 ppb	687,537 cps	1.0 %
107Ag (KED)	99.699 ppb	4,959,922 cps	0.1 %
114Cd (KED)	99.802 ppb	1,854,451 cps	0.7 %
133Cs (KED)	100.274 ppb	2,796,259 cps	1.6 %
138Ba (KED)	100.187 ppb	4,039,477 cps	0.8 %
139La (KED)	99.448 ppb	8,246,790 cps	0.8 %
140Ce (KED)	99.772 ppb	11,133,677 cps	0.6 %
141Pr (KED)	99.867 ppb	11,545,108 cps	1.8 %
142Nd (KED)	99.535 ppb	4,769,746 cps	1.4 %
152Sm (KED)	99.187 ppb	4,487,444 cps	1.0 %
153Eu (KED)	100.154 ppb	8,975,298 cps	0.5 %
158Gd (KED)	99.381 ppb	6,352,731 cps	0.9 %
164Dy (KED)	99.494 ppb	7,110,819 cps	1.8 %
165Ho (KED)	99.996 ppb	24,690,833 cps	0.7 %
166Er (KED)	99.596 ppb	8,707,795 cps	0.4 %
169Tm (KED)	100.275 ppb	29,330,305 cps	0.9 %
174Yb (KED)	99.986 ppb	10,597,670 cps	1.0 %
175Lu (KED)	100.030 ppb	16,881,945 cps	1.2 %
205Tl (KED)	99.963 ppb	21,911,162 cps	1.3 %
208Pb (KED)	99.564 ppb	15,687,752 cps	2.2 %
232Th (KED)	100.218 ppb	31,286,980 cps	0.9 %
238U (KED)	100.635 ppb	36,906,001 cps	1.8 %

Sample Summary

Instrument ID: iCAP Q

Analysis index: 6

Analysis name: 复测

Analysis started at: 9/1/2021 4:05:18 PM

User name: WINDOWS-UPCI4ER\Administrator

Category	Concentration average	Concentration RSD
9Be (KED)	0.061 ppb	28.9 %
11B (KED)	9.826 ppb	6.9 %
24Mg (KED)	906.870 ppb	1.8 %
27Al (KED)	1,223.270 ppb	3.3 %
51V (KED)	2.466 ppb	2.2 %
52Cr (KED)	8.929 ppb	1.5 %
55Mn (KED)	30.347 ppb	2.0 %
56Fe (KED)	1,345.240 ppb	1.0 %
58Ni (KED)	6.196 ppb	2.4 %
59Co (KED)	0.697 ppb	1.9 %
63Cu (KED)	7.418 ppb	1.2 %
64Zn (KED)	164.194 ppb	0.3 %
69Ga (KED)	2.322 ppb	4.6 %
75As (KED)	0.886 ppb	4.3 %
80Se (KED)	1.216 ppb	3.8 %
85Rb (KED)	4.286 ppb	0.8 %
88Sr (KED)	10.893 ppb	0.2 %
107Ag (KED)	0.079 ppb	3.9 %
114Cd (KED)	0.128 ppb	0.3 %
133Cs (KED)	0.312 ppb	2.4 %
138Ba (KED)	8.331 ppb	2.1 %
139La (KED)	1.073 ppb	1.7 %
140Ce (KED)	2.258 ppb	0.9 %
141Pr (KED)	0.284 ppb	1.7 %
142Nd (KED)	1.418 ppb	1.0 %
152Sm (KED)	0.215 ppb	2.7 %
153Eu (KED)	0.056 ppb	3.5 %
158Gd (KED)	0.192 ppb	2.2 %
164Dy (KED)	0.139 ppb	0.7 %
165Ho (KED)	0.041 ppb	1.9 %
166Er (KED)	0.072 ppb	3.0 %
169Tm (KED)	0.025 ppb	2.2 %
174Yb (KED)	0.064 ppb	1.6 %
175Lu (KED)	0.025 ppb	2.0 %
205Tl (KED)	0.038 ppb	2.5 %
208Pb (KED)	1.416 ppb	2.7 %
232Th (KED)	0.425 ppb	4.3 %
238U (KED)	0.099 ppb	1.0 %

Category	Concentration average	Intensity average	Intensity RSD
9Be (KED)	0.061 ppb	8 cps	24.7 %
11B (KED)	9.826 ppb	747 cps	5.3 %
24Mg (KED)	906.870 ppb	356,801 cps	1.8 %
27Al (KED)	1,223.270 ppb	121,033 cps	3.3 %
51V (KED)	2.466 ppb	16,114 cps	2.2 %
52Cr (KED)	8.929 ppb	90,811 cps	1.5 %
55Mn (KED)	30.347 ppb	150,976 cps	2.0 %
56Fe (KED)	1,345.240 ppb	12,749,581 cps	1.0 %
58Ni (KED)	6.196 ppb	78,894 cps	2.3 %
59Co (KED)	0.697 ppb	13,959 cps	1.9 %

Category	Concentration average	Intensity average	Intensity RSD
63Cu (KED)	7.418 ppb	123,796 cps	1.1 %
64Zn (KED)	164.194 ppb	650,742 cps	0.3 %
69Ga (KED)	2.322 ppb	12,036 cps	4.5 %
75As (KED)	0.886 ppb	1,033 cps	4.2 %
80Se (KED)	1.216 ppb	1,229 cps	1.3 %
85Rb (KED)	4.286 ppb	20,452 cps	0.8 %
88Sr (KED)	10.893 ppb	74,818 cps	0.2 %
107Ag (KED)	0.079 ppb	4,462 cps	3.5 %
114Cd (KED)	0.128 ppb	2,879 cps	0.3 %
133Cs (KED)	0.312 ppb	8,716 cps	2.4 %
138Ba (KED)	8.331 ppb	349,799 cps	2.0 %
139La (KED)	1.073 ppb	89,039 cps	1.7 %
140Ce (KED)	2.258 ppb	252,183 cps	0.9 %
141Pr (KED)	0.284 ppb	32,837 cps	1.7 %
142Nd (KED)	1.418 ppb	68,011 cps	1.0 %
152Sm (KED)	0.215 ppb	9,737 cps	2.7 %
153Eu (KED)	0.056 ppb	4,995 cps	3.5 %
158Gd (KED)	0.192 ppb	12,264 cps	2.2 %
164Dy (KED)	0.139 ppb	9,951 cps	0.7 %
165Ho (KED)	0.041 ppb	10,056 cps	1.9 %
166Er (KED)	0.072 ppb	6,771 cps	2.8 %
169Tm (KED)	0.025 ppb	7,470 cps	2.2 %
174Yb (KED)	0.064 ppb	6,805 cps	1.6 %
175Lu (KED)	0.025 ppb	4,279 cps	2.0 %
205Tl (KED)	0.038 ppb	8,281 cps	2.5 %
208Pb (KED)	1.416 ppb	242,592 cps	2.4 %
232Th (KED)	0.425 ppb	134,039 cps	4.3 %
238U (KED)	0.099 ppb	36,554 cps	1.0 %

Sample Summary

Instrument ID: iCAP Q

Analysis index: 7

Analysis name: 290jian

Analysis started at: 9/1/2021 4:08:57 PM

User name: WINDOWS-UPCI4ER\Administrator

Category	Concentration average	Concentration RSD
9Be (KED)	0.082 ppb	75.0 %
11B (KED)	6.397 ppb	14.9 %
24Mg (KED)	1,256.898 ppb	3.1 %
27Al (KED)	1,597.661 ppb	3.7 %
51V (KED)	3.106 ppb	1.9 %
52Cr (KED)	5.547 ppb	2.1 %
55Mn (KED)	40.198 ppb	1.9 %
56Fe (KED)	1,803.571 ppb	0.8 %
58Ni (KED)	8.293 ppb	1.9 %
59Co (KED)	0.863 ppb	3.9 %
63Cu (KED)	8.752 ppb	3.6 %
64Zn (KED)	181.069 ppb	2.5 %
69Ga (KED)	3.086 ppb	5.5 %
75As (KED)	0.959 ppb	3.5 %
80Se (KED)	1.280 ppb	8.7 %
85Rb (KED)	6.965 ppb	1.1 %
88Sr (KED)	12.877 ppb	0.6 %
107Ag (KED)	0.076 ppb	4.3 %
114Cd (KED)	0.100 ppb	1.8 %
133Cs (KED)	0.336 ppb	1.6 %
138Ba (KED)	9.569 ppb	1.8 %
139La (KED)	1.226 ppb	0.2 %
140Ce (KED)	2.559 ppb	0.6 %
141Pr (KED)	0.308 ppb	1.7 %
142Nd (KED)	1.598 ppb	2.0 %
152Sm (KED)	0.238 ppb	0.6 %
153Eu (KED)	0.048 ppb	4.6 %
158Gd (KED)	0.216 ppb	3.1 %
164Dy (KED)	0.153 ppb	1.4 %
165Ho (KED)	0.033 ppb	5.1 %
166Er (KED)	0.075 ppb	5.1 %
169Tm (KED)	0.013 ppb	10.3 %
174Yb (KED)	0.064 ppb	2.2 %
175Lu (KED)	0.012 ppb	3.0 %
205Tl (KED)	0.023 ppb	2.1 %
208Pb (KED)	1.495 ppb	2.5 %
232Th (KED)	0.383 ppb	1.6 %
238U (KED)	0.094 ppb	1.9 %

Category	Concentration average	Intensity average	Intensity RSD
9Be (KED)	0.082 ppb	10 cps	66.7 %
11B (KED)	6.397 ppb	549 cps	10.0 %
24Mg (KED)	1,256.898 ppb	494,270 cps	3.1 %
27Al (KED)	1,597.661 ppb	158,043 cps	3.7 %
51V (KED)	3.106 ppb	20,291 cps	1.9 %
52Cr (KED)	5.547 ppb	56,519 cps	2.1 %
55Mn (KED)	40.198 ppb	199,905 cps	1.9 %
56Fe (KED)	1,803.571 ppb	17,090,830 cps	0.8 %
58Ni (KED)	8.293 ppb	104,599 cps	1.8 %
59Co (KED)	0.863 ppb	17,285 cps	3.9 %

Category	Concentration average	Intensity average	Intensity RSD
63Cu (KED)	8.752 ppb	144,247 cps	3.3 %
64Zn (KED)	181.069 ppb	716,798 cps	2.5 %
69Ga (KED)	3.086 ppb	15,831 cps	5.3 %
75As (KED)	0.959 ppb	1,117 cps	3.4 %
80Se (KED)	1.280 ppb	1,250 cps	2.9 %
85Rb (KED)	6.965 ppb	33,189 cps	1.1 %
88Sr (KED)	12.877 ppb	88,400 cps	0.6 %
107Ag (KED)	0.076 ppb	4,294 cps	3.7 %
114Cd (KED)	0.100 ppb	2,348 cps	1.4 %
133Cs (KED)	0.336 ppb	9,389 cps	1.6 %
138Ba (KED)	9.569 ppb	399,560 cps	1.7 %
139La (KED)	1.226 ppb	101,743 cps	0.2 %
140Ce (KED)	2.559 ppb	285,708 cps	0.6 %
141Pr (KED)	0.308 ppb	35,612 cps	1.7 %
142Nd (KED)	1.598 ppb	76,620 cps	2.0 %
152Sm (KED)	0.238 ppb	10,770 cps	0.6 %
153Eu (KED)	0.048 ppb	4,286 cps	4.6 %
158Gd (KED)	0.216 ppb	13,834 cps	3.1 %
164Dy (KED)	0.153 ppb	10,980 cps	1.4 %
165Ho (KED)	0.033 ppb	8,134 cps	5.1 %
166Er (KED)	0.075 ppb	7,033 cps	4.8 %
169Tm (KED)	0.013 ppb	3,917 cps	10.3 %
174Yb (KED)	0.064 ppb	6,807 cps	2.2 %
175Lu (KED)	0.012 ppb	2,109 cps	3.0 %
205Tl (KED)	0.023 ppb	4,998 cps	2.1 %
208Pb (KED)	1.495 ppb	254,926 cps	2.3 %
232Th (KED)	0.383 ppb	120,879 cps	1.6 %
238U (KED)	0.094 ppb	34,507 cps	1.8 %

Sample Summary

Instrument ID: iCAP Q

Analysis index: 8

Analysis name: 179386jian

Analysis started at: 9/1/2021 4:12:27 PM

User name: WINDOWS-UPCI4ER\Administrator

Category	Concentration average	Concentration RSD
9Be (KED)	0.031 ppb	152.8 %
11B (KED)	11.175 ppb	8.6 %
24Mg (KED)	640.178 ppb	1.7 %
27Al (KED)	487.892 ppb	2.0 %
51V (KED)	0.890 ppb	1.7 %
52Cr (KED)	3.217 ppb	1.1 %
55Mn (KED)	13.100 ppb	0.5 %
56Fe (KED)	489.169 ppb	0.7 %
58Ni (KED)	2.434 ppb	2.0 %
59Co (KED)	0.330 ppb	3.9 %
63Cu (KED)	12.882 ppb	1.3 %
64Zn (KED)	191.098 ppb	0.7 %
69Ga (KED)	1.331 ppb	1.7 %
75As (KED)	0.341 ppb	6.2 %
80Se (KED)	1.377 ppb	7.2 %
85Rb (KED)	3.551 ppb	3.4 %
88Sr (KED)	11.225 ppb	0.8 %
107Ag (KED)	0.042 ppb	4.3 %
114Cd (KED)	0.093 ppb	3.3 %
133Cs (KED)	0.082 ppb	5.3 %
138Ba (KED)	3.857 ppb	1.0 %
139La (KED)	0.321 ppb	1.9 %
140Ce (KED)	0.658 ppb	1.0 %
141Pr (KED)	0.077 ppb	2.4 %
142Nd (KED)	0.395 ppb	1.7 %
152Sm (KED)	0.057 ppb	8.4 %
153Eu (KED)	0.013 ppb	7.5 %
158Gd (KED)	0.051 ppb	2.8 %
164Dy (KED)	0.033 ppb	6.9 %
165Ho (KED)	0.008 ppb	2.2 %
166Er (KED)	0.016 ppb	6.4 %
169Tm (KED)	0.003 ppb	7.4 %
174Yb (KED)	0.014 ppb	7.2 %
175Lu (KED)	0.003 ppb	2.6 %
205Tl (KED)	0.008 ppb	8.1 %
208Pb (KED)	0.612 ppb	2.1 %
232Th (KED)	0.104 ppb	3.5 %
238U (KED)	0.027 ppb	2.9 %

Category	Concentration average	Intensity average	Intensity RSD
9Be (KED)	0.031 ppb	4 cps	114.6 %
11B (KED)	11.175 ppb	824 cps	6.7 %
24Mg (KED)	640.178 ppb	252,062 cps	1.7 %
27Al (KED)	487.892 ppb	48,338 cps	2.0 %
51V (KED)	0.890 ppb	5,822 cps	1.7 %
52Cr (KED)	3.217 ppb	32,881 cps	1.0 %
55Mn (KED)	13.100 ppb	65,306 cps	0.5 %
56Fe (KED)	489.169 ppb	4,641,006 cps	0.7 %
58Ni (KED)	2.434 ppb	32,770 cps	1.8 %
59Co (KED)	0.330 ppb	6,614 cps	3.9 %

Category	Concentration average	Intensity average	Intensity RSD
63Cu (KED)	12.882 ppb	207,550 cps	1.3 %
64Zn (KED)	191.098 ppb	756,056 cps	0.7 %
69Ga (KED)	1.331 ppb	7,109 cps	1.6 %
75As (KED)	0.341 ppb	417 cps	5.8 %
80Se (KED)	1.377 ppb	1,282 cps	2.6 %
85Rb (KED)	3.551 ppb	16,957 cps	3.4 %
88Sr (KED)	11.225 ppb	77,095 cps	0.7 %
107Ag (KED)	0.042 ppb	2,637 cps	3.4 %
114Cd (KED)	0.093 ppb	2,226 cps	2.6 %
133Cs (KED)	0.082 ppb	2,312 cps	5.3 %
138Ba (KED)	3.857 ppb	170,099 cps	1.0 %
139La (KED)	0.321 ppb	26,687 cps	1.9 %
140Ce (KED)	0.658 ppb	73,638 cps	1.0 %
141Pr (KED)	0.077 ppb	8,979 cps	2.4 %
142Nd (KED)	0.395 ppb	18,987 cps	1.7 %
152Sm (KED)	0.057 ppb	2,571 cps	8.3 %
153Eu (KED)	0.013 ppb	1,154 cps	7.3 %
158Gd (KED)	0.051 ppb	3,303 cps	2.7 %
164Dy (KED)	0.033 ppb	2,409 cps	6.8 %
165Ho (KED)	0.008 ppb	2,072 cps	2.1 %
166Er (KED)	0.016 ppb	1,847 cps	4.8 %
169Tm (KED)	0.003 ppb	1,014 cps	7.3 %
174Yb (KED)	0.014 ppb	1,493 cps	7.2 %
175Lu (KED)	0.003 ppb	538 cps	2.6 %
205Tl (KED)	0.008 ppb	1,723 cps	8.0 %
208Pb (KED)	0.612 ppb	115,973 cps	1.7 %
232Th (KED)	0.104 ppb	33,745 cps	3.4 %
238U (KED)	0.027 ppb	10,016 cps	2.9 %

Sample Summary

Instrument ID: iCAP Q

Analysis index: 9

Analysis name: 179420jian

Analysis started at: 9/1/2021 4:15:44 PM

User name: WINDOWS-UPCI4ER\Administrator

Category	Concentration average	Concentration RSD
9Be (KED)	0.000 ppb	1,567,880,022,109,980,000.0 %
11B (KED)	12.813 ppb	3.0 %
24Mg (KED)	549.415 ppb	0.1 %
27Al (KED)	339.343 ppb	1.2 %
51V (KED)	0.615 ppb	2.4 %
52Cr (KED)	3.991 ppb	2.3 %
55Mn (KED)	9.169 ppb	1.7 %
56Fe (KED)	357.665 ppb	1.2 %
58Ni (KED)	1.838 ppb	2.3 %
59Co (KED)	0.216 ppb	3.9 %
63Cu (KED)	13.150 ppb	0.4 %
64Zn (KED)	185.992 ppb	1.0 %
69Ga (KED)	0.911 ppb	1.3 %
75As (KED)	0.231 ppb	12.3 %
80Se (KED)	1.135 ppb	8.0 %
85Rb (KED)	3.690 ppb	1.8 %
88Sr (KED)	8.473 ppb	1.7 %
107Ag (KED)	0.039 ppb	4.5 %
114Cd (KED)	0.052 ppb	4.4 %
133Cs (KED)	0.055 ppb	7.0 %
138Ba (KED)	2.516 ppb	1.5 %
139La (KED)	0.212 ppb	2.1 %
140Ce (KED)	0.428 ppb	0.8 %
141Pr (KED)	0.052 ppb	2.3 %
142Nd (KED)	0.266 ppb	1.8 %
152Sm (KED)	0.039 ppb	2.4 %
153Eu (KED)	0.008 ppb	5.7 %
158Gd (KED)	0.034 ppb	2.0 %
164Dy (KED)	0.024 ppb	2.5 %
165Ho (KED)	0.005 ppb	4.0 %
166Er (KED)	0.008 ppb	8.4 %
169Tm (KED)	0.002 ppb	13.1 %
174Yb (KED)	0.010 ppb	5.3 %
175Lu (KED)	0.001 ppb	17.6 %
205Tl (KED)	0.005 ppb	7.6 %
208Pb (KED)	0.753 ppb	3.6 %
232Th (KED)	0.071 ppb	2.1 %
238U (KED)	0.018 ppb	3.9 %

Category	Concentration average	Intensity average	Intensity RSD
9Be (KED)	0.000 ppb	1 cps	173.2 %
11B (KED)	12.813 ppb	919 cps	2.4 %
24Mg (KED)	549.415 ppb	216,416 cps	0.1 %
27Al (KED)	339.343 ppb	33,653 cps	1.2 %
51V (KED)	0.615 ppb	4,026 cps	2.4 %
52Cr (KED)	3.991 ppb	40,729 cps	2.3 %
55Mn (KED)	9.169 ppb	45,784 cps	1.7 %
56Fe (KED)	357.665 ppb	3,395,417 cps	1.2 %
58Ni (KED)	1.838 ppb	25,459 cps	2.1 %
59Co (KED)	0.216 ppb	4,346 cps	3.9 %

Category	Concentration average	Intensity average	Intensity RSD
63Cu (KED)	13.150 ppb	211,658 cps	0.4 %
64Zn (KED)	185.992 ppb	736,070 cps	1.0 %
69Ga (KED)	0.911 ppb	5,021 cps	1.2 %
75As (KED)	0.231 ppb	292 cps	11.0 %
80Se (KED)	1.135 ppb	1,202 cps	2.5 %
85Rb (KED)	3.690 ppb	17,622 cps	1.7 %
88Sr (KED)	8.473 ppb	58,264 cps	1.7 %
107Ag (KED)	0.039 ppb	2,460 cps	3.5 %
114Cd (KED)	0.052 ppb	1,459 cps	2.9 %
133Cs (KED)	0.055 ppb	1,566 cps	6.9 %
138Ba (KED)	2.516 ppb	116,244 cps	1.3 %
139La (KED)	0.212 ppb	17,591 cps	2.1 %
140Ce (KED)	0.428 ppb	47,917 cps	0.8 %
141Pr (KED)	0.052 ppb	5,987 cps	2.3 %
142Nd (KED)	0.266 ppb	12,812 cps	1.8 %
152Sm (KED)	0.039 ppb	1,770 cps	2.4 %
153Eu (KED)	0.008 ppb	699 cps	5.5 %
158Gd (KED)	0.034 ppb	2,180 cps	2.0 %
164Dy (KED)	0.024 ppb	1,750 cps	2.5 %
165Ho (KED)	0.005 ppb	1,212 cps	3.9 %
166Er (KED)	0.008 ppb	1,166 cps	5.2 %
169Tm (KED)	0.002 ppb	533 cps	12.5 %
174Yb (KED)	0.010 ppb	1,071 cps	5.2 %
175Lu (KED)	0.001 ppb	257 cps	17.0 %
205Tl (KED)	0.005 ppb	1,195 cps	7.4 %
208Pb (KED)	0.753 ppb	138,201 cps	3.1 %
232Th (KED)	0.071 ppb	23,561 cps	2.0 %
238U (KED)	0.018 ppb	6,934 cps	3.8 %

Sample Summary

Instrument ID: iCAP Q

Analysis index: 10

Analysis name: 179412jian

Analysis started at: 9/1/2021 4:19:05 PM

User name: WINDOWS-UPCI4ER\Administrator

Category	Concentration average	Concentration RSD
9Be (KED)	0.020 ppb	150.0 %
11B (KED)	3.699 ppb	18.0 %
24Mg (KED)	910.638 ppb	0.7 %
27Al (KED)	778.177 ppb	1.0 %
51V (KED)	1.422 ppb	1.2 %
52Cr (KED)	3.996 ppb	1.7 %
55Mn (KED)	21.217 ppb	1.0 %
56Fe (KED)	784.768 ppb	0.5 %
58Ni (KED)	3.859 ppb	1.4 %
59Co (KED)	0.397 ppb	2.8 %
63Cu (KED)	14.390 ppb	1.0 %
64Zn (KED)	185.355 ppb	0.5 %
69Ga (KED)	1.998 ppb	4.6 %
75As (KED)	0.569 ppb	9.2 %
80Se (KED)	1.008 ppb	12.2 %
85Rb (KED)	4.002 ppb	1.5 %
88Sr (KED)	14.892 ppb	0.5 %
107Ag (KED)	0.031 ppb	3.5 %
114Cd (KED)	0.039 ppb	12.3 %
133Cs (KED)	0.120 ppb	1.0 %
138Ba (KED)	5.426 ppb	1.0 %
139La (KED)	0.554 ppb	0.9 %
140Ce (KED)	1.108 ppb	1.5 %
141Pr (KED)	0.129 ppb	1.7 %
142Nd (KED)	0.693 ppb	0.2 %
152Sm (KED)	0.091 ppb	4.1 %
153Eu (KED)	0.018 ppb	4.3 %
158Gd (KED)	0.080 ppb	0.8 %
164Dy (KED)	0.054 ppb	2.5 %
165Ho (KED)	0.010 ppb	2.0 %
166Er (KED)	0.022 ppb	6.8 %
169Tm (KED)	0.004 ppb	3.6 %
174Yb (KED)	0.023 ppb	3.4 %
175Lu (KED)	0.003 ppb	13.0 %
205Tl (KED)	0.008 ppb	6.5 %
208Pb (KED)	1.588 ppb	1.0 %
232Th (KED)	0.146 ppb	0.5 %
238U (KED)	0.039 ppb	3.4 %

Category	Concentration average	Intensity average	Intensity RSD
9Be (KED)	0.020 ppb	3 cps	100.0 %
11B (KED)	3.699 ppb	393 cps	9.8 %
24Mg (KED)	910.638 ppb	358,281 cps	0.7 %
27Al (KED)	778.177 ppb	77,034 cps	1.0 %
51V (KED)	1.422 ppb	9,298 cps	1.1 %
52Cr (KED)	3.996 ppb	40,782 cps	1.7 %
55Mn (KED)	21.217 ppb	105,624 cps	1.0 %
56Fe (KED)	784.768 ppb	7,440,872 cps	0.5 %
58Ni (KED)	3.859 ppb	50,237 cps	1.3 %
59Co (KED)	0.397 ppb	7,963 cps	2.8 %

Category	Concentration average	Intensity average	Intensity RSD
63Cu (KED)	14.390 ppb	230,654 cps	1.0 %
64Zn (KED)	185.355 ppb	733,575 cps	0.5 %
69Ga (KED)	1.998 ppb	10,424 cps	4.4 %
75As (KED)	0.569 ppb	676 cps	8.8 %
80Se (KED)	1.008 ppb	1,160 cps	3.5 %
85Rb (KED)	4.002 ppb	19,105 cps	1.5 %
88Sr (KED)	14.892 ppb	102,186 cps	0.5 %
107Ag (KED)	0.031 ppb	2,097 cps	2.6 %
114Cd (KED)	0.039 ppb	1,219 cps	7.3 %
133Cs (KED)	0.120 ppb	3,370 cps	1.0 %
138Ba (KED)	5.426 ppb	233,117 cps	0.9 %
139La (KED)	0.554 ppb	45,964 cps	0.9 %
140Ce (KED)	1.108 ppb	123,758 cps	1.5 %
141Pr (KED)	0.129 ppb	14,952 cps	1.7 %
142Nd (KED)	0.693 ppb	33,243 cps	0.2 %
152Sm (KED)	0.091 ppb	4,142 cps	4.1 %
153Eu (KED)	0.018 ppb	1,658 cps	4.2 %
158Gd (KED)	0.080 ppb	5,153 cps	0.8 %
164Dy (KED)	0.054 ppb	3,900 cps	2.5 %
165Ho (KED)	0.010 ppb	2,590 cps	2.0 %
166Er (KED)	0.022 ppb	2,372 cps	5.6 %
169Tm (KED)	0.004 ppb	1,048 cps	3.5 %
174Yb (KED)	0.023 ppb	2,395 cps	3.4 %
175Lu (KED)	0.003 ppb	510 cps	12.8 %
205Tl (KED)	0.008 ppb	1,799 cps	6.4 %
208Pb (KED)	1.588 ppb	269,618 cps	0.9 %
232Th (KED)	0.146 ppb	46,906 cps	0.5 %
238U (KED)	0.039 ppb	14,579 cps	3.4 %

Sample Summary

Instrument ID: iCAP Q

Analysis index: 11

Analysis name: 179348jian

Analysis started at: 9/1/2021 4:22:20 PM

User name: WINDOWS-UPCI4ER\Administrator

Category	Concentration average	Concentration RSD
9Be (KED)	0.051 ppb	120.0 %
11B (KED)	3.661 ppb	23.8 %
24Mg (KED)	858.552 ppb	0.6 %
27Al (KED)	792.054 ppb	1.4 %
51V (KED)	1.389 ppb	2.8 %
52Cr (KED)	5.001 ppb	1.2 %
55Mn (KED)	21.235 ppb	1.7 %
56Fe (KED)	803.544 ppb	1.4 %
58Ni (KED)	3.721 ppb	1.6 %
59Co (KED)	0.422 ppb	0.5 %
63Cu (KED)	16.304 ppb	1.3 %
64Zn (KED)	179.011 ppb	1.3 %
69Ga (KED)	1.991 ppb	2.3 %
75As (KED)	0.404 ppb	9.6 %
80Se (KED)	1.364 ppb	19.2 %
85Rb (KED)	3.650 ppb	1.6 %
88Sr (KED)	14.369 ppb	1.7 %
107Ag (KED)	0.069 ppb	1.0 %
114Cd (KED)	0.083 ppb	10.3 %
133Cs (KED)	0.122 ppb	1.8 %
138Ba (KED)	5.425 ppb	2.4 %
139La (KED)	0.478 ppb	0.9 %
140Ce (KED)	0.963 ppb	2.4 %
141Pr (KED)	0.118 ppb	3.2 %
142Nd (KED)	0.602 ppb	0.7 %
152Sm (KED)	0.087 ppb	1.6 %
153Eu (KED)	0.017 ppb	8.0 %
158Gd (KED)	0.082 ppb	1.7 %
164Dy (KED)	0.054 ppb	0.8 %
165Ho (KED)	0.010 ppb	9.1 %
166Er (KED)	0.024 ppb	8.9 %
169Tm (KED)	0.004 ppb	1.4 %
174Yb (KED)	0.022 ppb	2.2 %
175Lu (KED)	0.003 ppb	18.4 %
205Tl (KED)	0.008 ppb	4.6 %
208Pb (KED)	1.014 ppb	2.2 %
232Th (KED)	0.134 ppb	0.8 %
238U (KED)	0.042 ppb	2.7 %

Category	Concentration average	Intensity average	Intensity RSD
9Be (KED)	0.051 ppb	7 cps	100.0 %
11B (KED)	3.661 ppb	391 cps	12.8 %
24Mg (KED)	858.552 ppb	337,825 cps	0.6 %
27Al (KED)	792.054 ppb	78,405 cps	1.4 %
51V (KED)	1.389 ppb	9,078 cps	2.8 %
52Cr (KED)	5.001 ppb	50,979 cps	1.2 %
55Mn (KED)	21.235 ppb	105,715 cps	1.6 %
56Fe (KED)	803.544 ppb	7,618,720 cps	1.4 %
58Ni (KED)	3.721 ppb	48,549 cps	1.5 %
59Co (KED)	0.422 ppb	8,455 cps	0.5 %

Category	Concentration average	Intensity average	Intensity RSD
63Cu (KED)	16.304 ppb	260,001 cps	1.2 %
64Zn (KED)	179.011 ppb	708,743 cps	1.3 %
69Ga (KED)	1.991 ppb	10,387 cps	2.2 %
75As (KED)	0.404 ppb	489 cps	9.0 %
80Se (KED)	1.364 ppb	1,278 cps	6.8 %
85Rb (KED)	3.650 ppb	17,432 cps	1.6 %
88Sr (KED)	14.369 ppb	98,608 cps	1.7 %
107Ag (KED)	0.069 ppb	3,950 cps	0.9 %
114Cd (KED)	0.083 ppb	2,031 cps	7.8 %
133Cs (KED)	0.122 ppb	3,425 cps	1.8 %
138Ba (KED)	5.425 ppb	233,096 cps	2.2 %
139La (KED)	0.478 ppb	39,695 cps	0.9 %
140Ce (KED)	0.963 ppb	107,666 cps	2.4 %
141Pr (KED)	0.118 ppb	13,694 cps	3.2 %
142Nd (KED)	0.602 ppb	28,913 cps	0.7 %
152Sm (KED)	0.087 ppb	3,960 cps	1.6 %
153Eu (KED)	0.017 ppb	1,565 cps	7.9 %
158Gd (KED)	0.082 ppb	5,262 cps	1.7 %
164Dy (KED)	0.054 ppb	3,846 cps	0.8 %
165Ho (KED)	0.010 ppb	2,581 cps	9.0 %
166Er (KED)	0.024 ppb	2,500 cps	7.3 %
169Tm (KED)	0.004 ppb	1,104 cps	1.4 %
174Yb (KED)	0.022 ppb	2,308 cps	2.2 %
175Lu (KED)	0.003 ppb	517 cps	18.2 %
205Tl (KED)	0.008 ppb	1,765 cps	4.5 %
208Pb (KED)	1.014 ppb	179,257 cps	2.0 %
232Th (KED)	0.134 ppb	43,036 cps	0.7 %
238U (KED)	0.042 ppb	15,467 cps	2.7 %

Sample Summary

Instrument ID: iCAP Q

Analysis index: 12

Analysis name: 179362jian

Analysis started at: 9/1/2021 4:25:41 PM

User name: WINDOWS-UPCI4ER\Administrator

Category	Concentration average	Concentration RSD
9Be (KED)	0.020 ppb	150.0 %
11B (KED)	1.214 ppb	107.9 %
24Mg (KED)	698.736 ppb	0.8 %
27Al (KED)	616.296 ppb	1.5 %
51V (KED)	1.080 ppb	1.1 %
52Cr (KED)	3.501 ppb	0.5 %
55Mn (KED)	15.806 ppb	1.2 %
56Fe (KED)	602.070 ppb	0.8 %
58Ni (KED)	2.863 ppb	2.1 %
59Co (KED)	0.306 ppb	2.2 %
63Cu (KED)	14.201 ppb	0.3 %
64Zn (KED)	183.550 ppb	0.5 %
69Ga (KED)	1.535 ppb	1.4 %
75As (KED)	0.406 ppb	10.9 %
80Se (KED)	1.092 ppb	8.4 %
85Rb (KED)	2.556 ppb	1.8 %
88Sr (KED)	11.171 ppb	2.0 %
107Ag (KED)	0.036 ppb	3.0 %
114Cd (KED)	0.046 ppb	8.6 %
133Cs (KED)	0.096 ppb	6.5 %
138Ba (KED)	4.181 ppb	1.8 %
139La (KED)	0.372 ppb	1.5 %
140Ce (KED)	0.759 ppb	3.4 %
141Pr (KED)	0.089 ppb	3.7 %
142Nd (KED)	0.462 ppb	2.3 %
152Sm (KED)	0.064 ppb	5.1 %
153Eu (KED)	0.013 ppb	5.8 %
158Gd (KED)	0.057 ppb	5.3 %
164Dy (KED)	0.041 ppb	1.4 %
165Ho (KED)	0.008 ppb	8.1 %
166Er (KED)	0.016 ppb	7.7 %
169Tm (KED)	0.003 ppb	3.5 %
174Yb (KED)	0.016 ppb	4.9 %
175Lu (KED)	0.002 ppb	12.6 %
205Tl (KED)	0.007 ppb	2.0 %
208Pb (KED)	0.639 ppb	2.5 %
232Th (KED)	0.100 ppb	0.9 %
238U (KED)	0.028 ppb	3.2 %

Category	Concentration average	Intensity average	Intensity RSD
9Be (KED)	0.020 ppb	3 cps	100.0 %
11B (KED)	1.214 ppb	250 cps	30.2 %
24Mg (KED)	698.736 ppb	275,060 cps	0.8 %
27Al (KED)	616.296 ppb	61,031 cps	1.5 %
51V (KED)	1.080 ppb	7,063 cps	1.1 %
52Cr (KED)	3.501 ppb	35,762 cps	0.5 %
55Mn (KED)	15.806 ppb	78,748 cps	1.2 %
56Fe (KED)	602.070 ppb	5,710,386 cps	0.8 %
58Ni (KED)	2.863 ppb	38,021 cps	1.9 %
59Co (KED)	0.306 ppb	6,139 cps	2.2 %

Category	Concentration average	Intensity average	Intensity RSD
63Cu (KED)	14.201 ppb	227,768 cps	0.3 %
64Zn (KED)	183.550 ppb	726,510 cps	0.5 %
69Ga (KED)	1.535 ppb	8,122 cps	1.3 %
75As (KED)	0.406 ppb	491 cps	10.2 %
80Se (KED)	1.092 ppb	1,188 cps	2.5 %
85Rb (KED)	2.556 ppb	12,229 cps	1.8 %
88Sr (KED)	11.171 ppb	76,723 cps	2.0 %
107Ag (KED)	0.036 ppb	2,307 cps	2.3 %
114Cd (KED)	0.046 ppb	1,356 cps	5.4 %
133Cs (KED)	0.096 ppb	2,706 cps	6.4 %
138Ba (KED)	4.181 ppb	183,108 cps	1.7 %
139La (KED)	0.372 ppb	30,902 cps	1.5 %
140Ce (KED)	0.759 ppb	84,832 cps	3.4 %
141Pr (KED)	0.089 ppb	10,292 cps	3.7 %
142Nd (KED)	0.462 ppb	22,196 cps	2.3 %
152Sm (KED)	0.064 ppb	2,894 cps	5.1 %
153Eu (KED)	0.013 ppb	1,144 cps	5.7 %
158Gd (KED)	0.057 ppb	3,652 cps	5.3 %
164Dy (KED)	0.041 ppb	2,911 cps	1.4 %
165Ho (KED)	0.008 ppb	1,979 cps	8.1 %
166Er (KED)	0.016 ppb	1,812 cps	5.8 %
169Tm (KED)	0.003 ppb	838 cps	3.4 %
174Yb (KED)	0.016 ppb	1,678 cps	4.9 %
175Lu (KED)	0.002 ppb	362 cps	12.4 %
205Tl (KED)	0.007 ppb	1,586 cps	2.0 %
208Pb (KED)	0.639 ppb	120,364 cps	2.0 %
232Th (KED)	0.100 ppb	32,596 cps	0.8 %
238U (KED)	0.028 ppb	10,524 cps	3.1 %

Sample Summary

Instrument ID: iCAP Q

Analysis index: 13

Analysis name: 179402jian

Analysis started at: 9/1/2021 4:29:00 PM

User name: WINDOWS-UPCI4ER\Administrator

Category	Concentration average	Concentration RSD
9Be (KED)	0.020 ppb	150.0 %
11B (KED)	3.969 ppb	11.7 %
24Mg (KED)	297.238 ppb	2.1 %
27Al (KED)	212.829 ppb	1.5 %
51V (KED)	0.372 ppb	2.5 %
52Cr (KED)	3.056 ppb	1.2 %
55Mn (KED)	5.200 ppb	1.4 %
56Fe (KED)	217.899 ppb	0.8 %
58Ni (KED)	1.206 ppb	2.3 %
59Co (KED)	0.184 ppb	5.1 %
63Cu (KED)	13.790 ppb	2.1 %
64Zn (KED)	188.871 ppb	1.0 %
69Ga (KED)	0.511 ppb	2.8 %
75As (KED)	0.195 ppb	12.8 %
80Se (KED)	1.317 ppb	10.2 %
85Rb (KED)	1.950 ppb	0.5 %
88Sr (KED)	4.487 ppb	0.5 %
107Ag (KED)	0.048 ppb	3.0 %
114Cd (KED)	0.121 ppb	2.3 %
133Cs (KED)	0.031 ppb	6.3 %
138Ba (KED)	1.387 ppb	2.0 %
139La (KED)	0.118 ppb	1.9 %
140Ce (KED)	0.249 ppb	2.0 %
141Pr (KED)	0.029 ppb	1.9 %
142Nd (KED)	0.161 ppb	1.6 %
152Sm (KED)	0.022 ppb	6.9 %
153Eu (KED)	0.004 ppb	6.6 %
158Gd (KED)	0.019 ppb	4.8 %
164Dy (KED)	0.014 ppb	5.0 %
165Ho (KED)	0.003 ppb	8.1 %
166Er (KED)	0.003 ppb	17.1 %
169Tm (KED)	0.001 ppb	14.3 %
174Yb (KED)	0.006 ppb	16.3 %
175Lu (KED)	0.001 ppb	24.3 %
205Tl (KED)	0.003 ppb	8.8 %
208Pb (KED)	0.357 ppb	2.0 %
232Th (KED)	0.035 ppb	5.2 %
238U (KED)	0.013 ppb	2.6 %

Category	Concentration average	Intensity average	Intensity RSD
9Be (KED)	0.020 ppb	3 cps	100.0 %
11B (KED)	3.969 ppb	409 cps	6.5 %
24Mg (KED)	297.238 ppb	117,377 cps	2.0 %
27Al (KED)	212.829 ppb	21,147 cps	1.4 %
51V (KED)	0.372 ppb	2,442 cps	2.5 %
52Cr (KED)	3.056 ppb	31,254 cps	1.2 %
55Mn (KED)	5.200 ppb	26,067 cps	1.3 %
56Fe (KED)	217.899 ppb	2,071,576 cps	0.8 %
58Ni (KED)	1.206 ppb	17,713 cps	2.0 %
59Co (KED)	0.184 ppb	3,693 cps	5.1 %

Category	Concentration average	Intensity average	Intensity RSD
63Cu (KED)	13.790 ppb	221,458 cps	2.0 %
64Zn (KED)	188.871 ppb	747,338 cps	1.0 %
69Ga (KED)	0.511 ppb	3,034 cps	2.4 %
75As (KED)	0.195 ppb	252 cps	11.2 %
80Se (KED)	1.317 ppb	1,262 cps	3.5 %
85Rb (KED)	1.950 ppb	9,349 cps	0.5 %
88Sr (KED)	4.487 ppb	30,984 cps	0.5 %
107Ag (KED)	0.048 ppb	2,925 cps	2.5 %
114Cd (KED)	0.121 ppb	2,738 cps	1.8 %
133Cs (KED)	0.031 ppb	882 cps	6.1 %
138Ba (KED)	1.387 ppb	70,882 cps	1.6 %
139La (KED)	0.118 ppb	9,815 cps	1.9 %
140Ce (KED)	0.249 ppb	27,941 cps	2.0 %
141Pr (KED)	0.029 ppb	3,369 cps	1.8 %
142Nd (KED)	0.161 ppb	7,775 cps	1.6 %
152Sm (KED)	0.022 ppb	1,011 cps	6.8 %
153Eu (KED)	0.004 ppb	406 cps	6.2 %
158Gd (KED)	0.019 ppb	1,230 cps	4.7 %
164Dy (KED)	0.014 ppb	1,048 cps	4.9 %
165Ho (KED)	0.003 ppb	696 cps	8.0 %
166Er (KED)	0.003 ppb	708 cps	6.4 %
169Tm (KED)	0.001 ppb	299 cps	13.3 %
174Yb (KED)	0.006 ppb	592 cps	16.1 %
175Lu (KED)	0.001 ppb	141 cps	22.9 %
205Tl (KED)	0.003 ppb	780 cps	8.5 %
208Pb (KED)	0.357 ppb	75,874 cps	1.5 %
232Th (KED)	0.035 ppb	12,283 cps	4.7 %
238U (KED)	0.013 ppb	4,804 cps	2.5 %

Sample Summary

Instrument ID: iCAP Q

Analysis index: 14

Analysis name: 179363jian

Analysis started at: 9/1/2021 4:32:31 PM

User name: WINDOWS-UPCI4ER\Administrator

Category	Concentration average	Concentration RSD
9Be (KED)	0.010 ppb	173.2 %
11B (KED)	4.740 ppb	12.0 %
24Mg (KED)	554.105 ppb	0.9 %
27Al (KED)	437.544 ppb	1.9 %
51V (KED)	0.790 ppb	4.3 %
52Cr (KED)	2.875 ppb	1.0 %
55Mn (KED)	11.400 ppb	0.8 %
56Fe (KED)	433.554 ppb	0.1 %
58Ni (KED)	2.308 ppb	1.1 %
59Co (KED)	0.230 ppb	3.0 %
63Cu (KED)	14.030 ppb	0.5 %
64Zn (KED)	175.496 ppb	0.4 %
69Ga (KED)	1.107 ppb	2.9 %
75As (KED)	0.292 ppb	12.1 %
80Se (KED)	0.763 ppb	46.2 %
85Rb (KED)	2.397 ppb	1.5 %
88Sr (KED)	9.256 ppb	2.0 %
107Ag (KED)	0.028 ppb	5.8 %
114Cd (KED)	0.048 ppb	1.7 %
133Cs (KED)	0.069 ppb	2.6 %
138Ba (KED)	3.162 ppb	1.9 %
139La (KED)	0.279 ppb	1.9 %
140Ce (KED)	0.576 ppb	1.8 %
141Pr (KED)	0.070 ppb	5.5 %
142Nd (KED)	0.360 ppb	1.3 %
152Sm (KED)	0.049 ppb	5.2 %
153Eu (KED)	0.010 ppb	10.2 %
158Gd (KED)	0.043 ppb	2.5 %
164Dy (KED)	0.031 ppb	5.4 %
165Ho (KED)	0.006 ppb	6.0 %
166Er (KED)	0.010 ppb	7.4 %
169Tm (KED)	0.002 ppb	3.9 %
174Yb (KED)	0.013 ppb	5.0 %
175Lu (KED)	0.002 ppb	16.8 %
205Tl (KED)	0.005 ppb	5.9 %
208Pb (KED)	0.634 ppb	3.0 %
232Th (KED)	0.073 ppb	3.6 %
238U (KED)	0.024 ppb	3.6 %

Category	Concentration average	Intensity average	Intensity RSD
9Be (KED)	0.010 ppb	2 cps	86.6 %
11B (KED)	4.740 ppb	453 cps	7.2 %
24Mg (KED)	554.105 ppb	218,258 cps	0.9 %
27Al (KED)	437.544 ppb	43,361 cps	1.9 %
51V (KED)	0.790 ppb	5,170 cps	4.3 %
52Cr (KED)	2.875 ppb	29,411 cps	1.0 %
55Mn (KED)	11.400 ppb	56,863 cps	0.8 %
56Fe (KED)	433.554 ppb	4,114,223 cps	0.1 %
58Ni (KED)	2.308 ppb	31,222 cps	1.0 %
59Co (KED)	0.230 ppb	4,626 cps	3.0 %

Category	Concentration average	Intensity average	Intensity RSD
63Cu (KED)	14.030 ppb	225,144 cps	0.4 %
64Zn (KED)	175.496 ppb	694,984 cps	0.4 %
69Ga (KED)	1.107 ppb	5,994 cps	2.7 %
75As (KED)	0.292 ppb	361 cps	11.1 %
80Se (KED)	0.763 ppb	1,079 cps	10.8 %
85Rb (KED)	2.397 ppb	11,472 cps	1.5 %
88Sr (KED)	9.256 ppb	63,622 cps	2.0 %
107Ag (KED)	0.028 ppb	1,945 cps	4.2 %
114Cd (KED)	0.048 ppb	1,397 cps	1.1 %
133Cs (KED)	0.069 ppb	1,936 cps	2.6 %
138Ba (KED)	3.162 ppb	142,206 cps	1.7 %
139La (KED)	0.279 ppb	23,187 cps	1.9 %
140Ce (KED)	0.576 ppb	64,430 cps	1.8 %
141Pr (KED)	0.070 ppb	8,176 cps	5.5 %
142Nd (KED)	0.360 ppb	17,327 cps	1.3 %
152Sm (KED)	0.049 ppb	2,244 cps	5.2 %
153Eu (KED)	0.010 ppb	919 cps	10.0 %
158Gd (KED)	0.043 ppb	2,780 cps	2.5 %
164Dy (KED)	0.031 ppb	2,261 cps	5.4 %
165Ho (KED)	0.006 ppb	1,546 cps	6.0 %
166Er (KED)	0.010 ppb	1,349 cps	5.0 %
169Tm (KED)	0.002 ppb	660 cps	3.8 %
174Yb (KED)	0.013 ppb	1,358 cps	5.0 %
175Lu (KED)	0.002 ppb	307 cps	16.4 %
205Tl (KED)	0.005 ppb	1,199 cps	5.7 %
208Pb (KED)	0.634 ppb	119,490 cps	2.5 %
232Th (KED)	0.073 ppb	24,084 cps	3.4 %
238U (KED)	0.024 ppb	8,963 cps	3.6 %

Sample Summary

Instrument ID: iCAP Q

Analysis index: 15

Analysis name: 179401jian

Analysis started at: 9/1/2021 4:35:35 PM

User name: WINDOWS-UPCI4ER\Administrator

Category	Concentration average	Concentration RSD
9Be (KED)	0.020 ppb	0.0 %
11B (KED)	1.985 ppb	62.3 %
24Mg (KED)	605.716 ppb	0.3 %
27Al (KED)	442.304 ppb	2.2 %
51V (KED)	0.822 ppb	3.8 %
52Cr (KED)	4.406 ppb	1.2 %
55Mn (KED)	12.062 ppb	1.2 %
56Fe (KED)	479.107 ppb	0.8 %
58Ni (KED)	3.581 ppb	2.2 %
59Co (KED)	0.241 ppb	3.5 %
63Cu (KED)	12.043 ppb	0.4 %
64Zn (KED)	171.961 ppb	1.1 %
69Ga (KED)	1.182 ppb	2.0 %
75As (KED)	0.338 ppb	7.6 %
80Se (KED)	1.125 ppb	11.7 %
85Rb (KED)	2.465 ppb	0.7 %
88Sr (KED)	10.922 ppb	2.6 %
107Ag (KED)	0.103 ppb	4.2 %
114Cd (KED)	0.070 ppb	1.2 %
133Cs (KED)	0.073 ppb	4.1 %
138Ba (KED)	3.330 ppb	0.9 %
139La (KED)	0.277 ppb	2.5 %
140Ce (KED)	0.569 ppb	2.2 %
141Pr (KED)	0.069 ppb	2.0 %
142Nd (KED)	0.355 ppb	2.5 %
152Sm (KED)	0.052 ppb	1.8 %
153Eu (KED)	0.010 ppb	5.3 %
158Gd (KED)	0.046 ppb	3.1 %
164Dy (KED)	0.032 ppb	1.9 %
165Ho (KED)	0.006 ppb	5.6 %
166Er (KED)	0.011 ppb	4.9 %
169Tm (KED)	0.002 ppb	12.6 %
174Yb (KED)	0.013 ppb	4.4 %
175Lu (KED)	0.002 ppb	7.7 %
205Tl (KED)	0.006 ppb	10.7 %
208Pb (KED)	0.660 ppb	1.8 %
232Th (KED)	0.074 ppb	3.7 %
238U (KED)	0.026 ppb	3.0 %

Category	Concentration average	Intensity average	Intensity RSD
9Be (KED)	0.020 ppb	3 cps	0.0 %
11B (KED)	1.985 ppb	294 cps	24.2 %
24Mg (KED)	605.716 ppb	238,528 cps	0.3 %
27Al (KED)	442.304 ppb	43,831 cps	2.2 %
51V (KED)	0.822 ppb	5,379 cps	3.8 %
52Cr (KED)	4.406 ppb	44,939 cps	1.2 %
55Mn (KED)	12.062 ppb	60,152 cps	1.2 %
56Fe (KED)	479.107 ppb	4,545,694 cps	0.8 %
58Ni (KED)	3.581 ppb	46,826 cps	2.1 %
59Co (KED)	0.241 ppb	4,833 cps	3.5 %

Category	Concentration average	Intensity average	Intensity RSD
63Cu (KED)	12.043 ppb	194,687 cps	0.3 %
64Zn (KED)	171.961 ppb	681,146 cps	1.1 %
69Ga (KED)	1.182 ppb	6,367 cps	1.9 %
75As (KED)	0.338 ppb	413 cps	7.0 %
80Se (KED)	1.125 ppb	1,199 cps	3.6 %
85Rb (KED)	2.465 ppb	11,794 cps	0.7 %
88Sr (KED)	10.922 ppb	75,021 cps	2.6 %
107Ag (KED)	0.103 ppb	5,667 cps	3.8 %
114Cd (KED)	0.070 ppb	1,802 cps	0.9 %
133Cs (KED)	0.073 ppb	2,059 cps	4.0 %
138Ba (KED)	3.330 ppb	148,923 cps	0.8 %
139La (KED)	0.277 ppb	22,989 cps	2.5 %
140Ce (KED)	0.569 ppb	63,668 cps	2.2 %
141Pr (KED)	0.069 ppb	7,960 cps	1.9 %
142Nd (KED)	0.355 ppb	17,055 cps	2.5 %
152Sm (KED)	0.052 ppb	2,352 cps	1.8 %
153Eu (KED)	0.010 ppb	890 cps	5.2 %
158Gd (KED)	0.046 ppb	2,950 cps	3.1 %
164Dy (KED)	0.032 ppb	2,322 cps	1.9 %
165Ho (KED)	0.006 ppb	1,525 cps	5.5 %
166Er (KED)	0.011 ppb	1,400 cps	3.3 %
169Tm (KED)	0.002 ppb	632 cps	12.2 %
174Yb (KED)	0.013 ppb	1,352 cps	4.4 %
175Lu (KED)	0.002 ppb	298 cps	7.5 %
205Tl (KED)	0.006 ppb	1,241 cps	10.4 %
208Pb (KED)	0.660 ppb	123,557 cps	1.5 %
232Th (KED)	0.074 ppb	24,497 cps	3.5 %
238U (KED)	0.026 ppb	9,619 cps	2.9 %

Sample Summary

Instrument ID: iCAP Q

Analysis index: 16

Analysis name: 179411jian

Analysis started at: 9/1/2021 4:38:43 PM

User name: WINDOWS-UPCI4ER\Administrator

Category	Concentration average	Concentration RSD
9Be (KED)	0.020 ppb	150.0 %
11B (KED)	2.505 ppb	27.0 %
24Mg (KED)	499.808 ppb	0.7 %
27Al (KED)	452.648 ppb	0.9 %
51V (KED)	0.799 ppb	2.2 %
52Cr (KED)	3.620 ppb	1.2 %
55Mn (KED)	11.902 ppb	1.6 %
56Fe (KED)	431.254 ppb	1.5 %
58Ni (KED)	2.498 ppb	1.1 %
59Co (KED)	0.246 ppb	3.1 %
63Cu (KED)	13.315 ppb	0.9 %
64Zn (KED)	311.245 ppb	1.9 %
69Ga (KED)	1.075 ppb	2.8 %
75As (KED)	0.321 ppb	5.8 %
80Se (KED)	1.149 ppb	16.2 %
85Rb (KED)	2.697 ppb	0.9 %
88Sr (KED)	7.809 ppb	1.4 %
107Ag (KED)	0.049 ppb	1.7 %
114Cd (KED)	0.083 ppb	5.4 %
133Cs (KED)	0.074 ppb	4.2 %
138Ba (KED)	3.115 ppb	3.7 %
139La (KED)	0.274 ppb	3.7 %
140Ce (KED)	0.578 ppb	0.4 %
141Pr (KED)	0.068 ppb	2.9 %
142Nd (KED)	0.354 ppb	3.0 %
152Sm (KED)	0.049 ppb	0.5 %
153Eu (KED)	0.011 ppb	7.5 %
158Gd (KED)	0.043 ppb	3.8 %
164Dy (KED)	0.032 ppb	3.1 %
165Ho (KED)	0.006 ppb	6.7 %
166Er (KED)	0.011 ppb	6.8 %
169Tm (KED)	0.002 ppb	1.4 %
174Yb (KED)	0.014 ppb	1.8 %
175Lu (KED)	0.002 ppb	10.5 %
205Tl (KED)	0.006 ppb	5.1 %
208Pb (KED)	0.665 ppb	1.1 %
232Th (KED)	0.076 ppb	3.0 %
238U (KED)	0.030 ppb	2.5 %

Category	Concentration average	Intensity average	Intensity RSD
9Be (KED)	0.020 ppb	3 cps	100.0 %
11B (KED)	2.505 ppb	324 cps	12.0 %
24Mg (KED)	499.808 ppb	196,934 cps	0.7 %
27Al (KED)	452.648 ppb	44,854 cps	0.9 %
51V (KED)	0.799 ppb	5,229 cps	2.2 %
52Cr (KED)	3.620 ppb	36,969 cps	1.2 %
55Mn (KED)	11.902 ppb	59,356 cps	1.5 %
56Fe (KED)	431.254 ppb	4,092,438 cps	1.5 %
58Ni (KED)	2.498 ppb	33,551 cps	1.0 %
59Co (KED)	0.246 ppb	4,944 cps	3.1 %

Category	Concentration average	Intensity average	Intensity RSD
63Cu (KED)	13.315 ppb	214,182 cps	0.9 %
64Zn (KED)	311.245 ppb	1,226,371 cps	1.9 %
69Ga (KED)	1.075 ppb	5,836 cps	2.5 %
75As (KED)	0.321 ppb	394 cps	5.4 %
80Se (KED)	1.149 ppb	1,207 cps	5.1 %
85Rb (KED)	2.697 ppb	12,898 cps	0.9 %
88Sr (KED)	7.809 ppb	53,720 cps	1.4 %
107Ag (KED)	0.049 ppb	2,956 cps	1.4 %
114Cd (KED)	0.083 ppb	2,036 cps	4.1 %
133Cs (KED)	0.074 ppb	2,075 cps	4.1 %
138Ba (KED)	3.115 ppb	140,297 cps	3.3 %
139La (KED)	0.274 ppb	22,798 cps	3.7 %
140Ce (KED)	0.578 ppb	64,638 cps	0.4 %
141Pr (KED)	0.068 ppb	7,854 cps	2.8 %
142Nd (KED)	0.354 ppb	17,034 cps	3.0 %
152Sm (KED)	0.049 ppb	2,246 cps	0.5 %
153Eu (KED)	0.011 ppb	966 cps	7.4 %
158Gd (KED)	0.043 ppb	2,787 cps	3.7 %
164Dy (KED)	0.032 ppb	2,305 cps	3.0 %
165Ho (KED)	0.006 ppb	1,550 cps	6.6 %
166Er (KED)	0.011 ppb	1,409 cps	4.6 %
169Tm (KED)	0.002 ppb	626 cps	1.3 %
174Yb (KED)	0.014 ppb	1,451 cps	1.8 %
175Lu (KED)	0.002 ppb	322 cps	10.2 %
205Tl (KED)	0.006 ppb	1,400 cps	5.0 %
208Pb (KED)	0.665 ppb	124,393 cps	0.9 %
232Th (KED)	0.076 ppb	25,066 cps	2.8 %
238U (KED)	0.030 ppb	11,240 cps	2.5 %

Sample Summary

Instrument ID: iCAP Q

Analysis index: 17

Analysis name: 179409jian

Analysis started at: 9/1/2021 4:42:01 PM

User name: WINDOWS-UPCI4ER\Administrator

Category	Concentration average	Concentration RSD
9Be (KED)	0.000 ppb	1,567,880,022,109,980,000.0 %
11B (KED)	1.464 ppb	12.1 %
24Mg (KED)	429.786 ppb	0.9 %
27Al (KED)	296.026 ppb	2.1 %
51V (KED)	0.504 ppb	4.1 %
52Cr (KED)	2.126 ppb	3.2 %
55Mn (KED)	7.432 ppb	0.8 %
56Fe (KED)	292.031 ppb	2.2 %
58Ni (KED)	1.626 ppb	2.1 %
59Co (KED)	0.165 ppb	4.0 %
63Cu (KED)	11.909 ppb	0.2 %
64Zn (KED)	173.507 ppb	1.2 %
69Ga (KED)	0.753 ppb	8.3 %
75As (KED)	0.193 ppb	8.1 %
80Se (KED)	1.078 ppb	13.3 %
85Rb (KED)	3.252 ppb	1.1 %
88Sr (KED)	6.887 ppb	0.6 %
107Ag (KED)	0.027 ppb	3.1 %
114Cd (KED)	0.064 ppb	12.2 %
133Cs (KED)	0.045 ppb	7.0 %
138Ba (KED)	2.034 ppb	2.9 %
139La (KED)	0.162 ppb	2.0 %
140Ce (KED)	0.344 ppb	0.5 %
141Pr (KED)	0.039 ppb	1.0 %
142Nd (KED)	0.211 ppb	1.1 %
152Sm (KED)	0.031 ppb	4.6 %
153Eu (KED)	0.006 ppb	14.2 %
158Gd (KED)	0.027 ppb	5.4 %
164Dy (KED)	0.021 ppb	1.4 %
165Ho (KED)	0.004 ppb	3.6 %
166Er (KED)	0.005 ppb	3.8 %
169Tm (KED)	0.001 ppb	14.2 %
174Yb (KED)	0.008 ppb	8.4 %
175Lu (KED)	0.001 ppb	9.4 %
205Tl (KED)	0.004 ppb	10.9 %
208Pb (KED)	0.430 ppb	3.6 %
232Th (KED)	0.046 ppb	3.9 %
238U (KED)	0.016 ppb	2.6 %

Category	Concentration average	Intensity average	Intensity RSD
9Be (KED)	0.000 ppb	1 cps	173.2 %
11B (KED)	1.464 ppb	264 cps	3.9 %
24Mg (KED)	429.786 ppb	169,433 cps	0.9 %
27Al (KED)	296.026 ppb	29,371 cps	2.1 %
51V (KED)	0.504 ppb	3,300 cps	4.1 %
52Cr (KED)	2.126 ppb	21,821 cps	3.2 %
55Mn (KED)	7.432 ppb	37,152 cps	0.8 %
56Fe (KED)	292.031 ppb	2,773,739 cps	2.1 %
58Ni (KED)	1.626 ppb	22,864 cps	1.8 %
59Co (KED)	0.165 ppb	3,309 cps	4.0 %

Category	Concentration average	Intensity average	Intensity RSD
63Cu (KED)	11.909 ppb	192,637 cps	0.2 %
64Zn (KED)	173.507 ppb	687,198 cps	1.2 %
69Ga (KED)	0.753 ppb	4,236 cps	7.3 %
75As (KED)	0.193 ppb	250 cps	7.1 %
80Se (KED)	1.078 ppb	1,183 cps	4.0 %
85Rb (KED)	3.252 ppb	15,539 cps	1.1 %
88Sr (KED)	6.887 ppb	47,409 cps	0.6 %
107Ag (KED)	0.027 ppb	1,878 cps	2.2 %
114Cd (KED)	0.064 ppb	1,690 cps	8.6 %
133Cs (KED)	0.045 ppb	1,272 cps	6.9 %
138Ba (KED)	2.034 ppb	96,876 cps	2.5 %
139La (KED)	0.162 ppb	13,469 cps	1.9 %
140Ce (KED)	0.344 ppb	38,509 cps	0.5 %
141Pr (KED)	0.039 ppb	4,575 cps	1.0 %
142Nd (KED)	0.211 ppb	10,144 cps	1.1 %
152Sm (KED)	0.031 ppb	1,409 cps	4.6 %
153Eu (KED)	0.006 ppb	588 cps	13.7 %
158Gd (KED)	0.027 ppb	1,748 cps	5.4 %
164Dy (KED)	0.021 ppb	1,491 cps	1.3 %
165Ho (KED)	0.004 ppb	967 cps	3.6 %
166Er (KED)	0.005 ppb	841 cps	1.8 %
169Tm (KED)	0.001 ppb	400 cps	13.4 %
174Yb (KED)	0.008 ppb	824 cps	8.3 %
175Lu (KED)	0.001 ppb	182 cps	9.0 %
205Tl (KED)	0.004 ppb	983 cps	10.5 %
208Pb (KED)	0.430 ppb	87,379 cps	2.8 %
232Th (KED)	0.046 ppb	15,614 cps	3.6 %
238U (KED)	0.016 ppb	6,113 cps	2.5 %

Sample Summary

Instrument ID: iCAP Q

Analysis index: 18

Analysis name: 634755jian

Analysis started at: 9/1/2021 4:45:23 PM

User name: WINDOWS-UPCI4ER\Administrator

Category	Concentration average	Concentration RSD
9Be (KED)	0.031 ppb	152.8 %
11B (KED)	6.936 ppb	14.2 %
24Mg (KED)	840.246 ppb	1.1 %
27Al (KED)	1,050.913 ppb	0.5 %
51V (KED)	1.979 ppb	2.9 %
52Cr (KED)	4.794 ppb	0.3 %
55Mn (KED)	27.832 ppb	3.0 %
56Fe (KED)	1,087.193 ppb	1.1 %
58Ni (KED)	4.844 ppb	0.6 %
59Co (KED)	0.544 ppb	2.0 %
63Cu (KED)	10.260 ppb	1.0 %
64Zn (KED)	176.722 ppb	0.5 %
69Ga (KED)	2.314 ppb	2.3 %
75As (KED)	0.689 ppb	3.5 %
80Se (KED)	0.887 ppb	51.5 %
85Rb (KED)	2.485 ppb	0.7 %
88Sr (KED)	10.182 ppb	1.1 %
107Ag (KED)	0.052 ppb	5.6 %
114Cd (KED)	0.058 ppb	5.4 %
133Cs (KED)	0.190 ppb	3.3 %
138Ba (KED)	6.792 ppb	2.2 %
139La (KED)	0.795 ppb	0.4 %
140Ce (KED)	1.633 ppb	1.2 %
141Pr (KED)	0.193 ppb	0.4 %
142Nd (KED)	0.994 ppb	1.3 %
152Sm (KED)	0.139 ppb	3.0 %
153Eu (KED)	0.026 ppb	3.2 %
158Gd (KED)	0.130 ppb	3.6 %
164Dy (KED)	0.092 ppb	2.9 %
165Ho (KED)	0.017 ppb	1.6 %
166Er (KED)	0.040 ppb	3.8 %
169Tm (KED)	0.006 ppb	6.6 %
174Yb (KED)	0.037 ppb	3.7 %
175Lu (KED)	0.005 ppb	3.2 %
205Tl (KED)	0.013 ppb	2.9 %
208Pb (KED)	0.922 ppb	1.2 %
232Th (KED)	0.208 ppb	1.2 %
238U (KED)	0.056 ppb	0.3 %

Category	Concentration average	Intensity average	Intensity RSD
9Be (KED)	0.031 ppb	4 cps	114.6 %
11B (KED)	6.936 ppb	580 cps	9.8 %
24Mg (KED)	840.246 ppb	330,636 cps	1.1 %
27Al (KED)	1,050.913 ppb	103,995 cps	0.5 %
51V (KED)	1.979 ppb	12,933 cps	2.9 %
52Cr (KED)	4.794 ppb	48,879 cps	0.2 %
55Mn (KED)	27.832 ppb	138,482 cps	3.0 %
56Fe (KED)	1,087.193 ppb	10,305,394 cps	1.1 %
58Ni (KED)	4.844 ppb	62,314 cps	0.5 %
59Co (KED)	0.544 ppb	10,903 cps	2.0 %

Category	Concentration average	Intensity average	Intensity RSD
63Cu (KED)	10.260 ppb	167,361 cps	1.0 %
64Zn (KED)	176.722 ppb	699,783 cps	0.5 %
69Ga (KED)	2.314 ppb	11,996 cps	2.2 %
75As (KED)	0.689 ppb	811 cps	3.3 %
80Se (KED)	0.887 ppb	1,120 cps	13.5 %
85Rb (KED)	2.485 ppb	11,892 cps	0.7 %
88Sr (KED)	10.182 ppb	69,955 cps	1.1 %
107Ag (KED)	0.052 ppb	3,133 cps	4.7 %
114Cd (KED)	0.058 ppb	1,582 cps	3.7 %
133Cs (KED)	0.190 ppb	5,318 cps	3.3 %
138Ba (KED)	6.792 ppb	287,986 cps	2.1 %
139La (KED)	0.795 ppb	65,951 cps	0.4 %
140Ce (KED)	1.633 ppb	182,348 cps	1.2 %
141Pr (KED)	0.193 ppb	22,382 cps	0.4 %
142Nd (KED)	0.994 ppb	47,684 cps	1.3 %
152Sm (KED)	0.139 ppb	6,310 cps	3.0 %
153Eu (KED)	0.026 ppb	2,357 cps	3.2 %
158Gd (KED)	0.130 ppb	8,324 cps	3.6 %
164Dy (KED)	0.092 ppb	6,626 cps	2.9 %
165Ho (KED)	0.017 ppb	4,297 cps	1.6 %
166Er (KED)	0.040 ppb	3,954 cps	3.4 %
169Tm (KED)	0.006 ppb	1,842 cps	6.5 %
174Yb (KED)	0.037 ppb	3,877 cps	3.7 %
175Lu (KED)	0.005 ppb	904 cps	3.1 %
205Tl (KED)	0.013 ppb	2,907 cps	2.9 %
208Pb (KED)	0.922 ppb	164,759 cps	1.0 %
232Th (KED)	0.208 ppb	66,099 cps	1.1 %
238U (KED)	0.056 ppb	20,691 cps	0.3 %

Sample Summary

Instrument ID: iCAP Q

Analysis index: 19

Analysis name: 046681(178563)jian

Analysis started at: 9/1/2021 4:48:38 PM

User name: WINDOWS-UPCI4ER\Administrator

Category	Concentration average	Concentration RSD
9Be (KED)	0.010 ppb	173.2 %
11B (KED)	10.539 ppb	11.7 %
24Mg (KED)	661.828 ppb	0.9 %
27Al (KED)	857.818 ppb	0.8 %
51V (KED)	1.393 ppb	0.7 %
52Cr (KED)	2.841 ppb	1.2 %
55Mn (KED)	19.903 ppb	0.8 %
56Fe (KED)	719.051 ppb	0.9 %
58Ni (KED)	3.462 ppb	1.3 %
59Co (KED)	0.373 ppb	5.0 %
63Cu (KED)	10.956 ppb	1.4 %
64Zn (KED)	156.479 ppb	0.8 %
69Ga (KED)	1.849 ppb	2.2 %
75As (KED)	0.576 ppb	2.2 %
80Se (KED)	1.011 ppb	37.7 %
85Rb (KED)	1.971 ppb	2.0 %
88Sr (KED)	8.076 ppb	1.0 %
107Ag (KED)	0.025 ppb	5.0 %
114Cd (KED)	0.074 ppb	4.9 %
133Cs (KED)	0.133 ppb	7.8 %
138Ba (KED)	5.339 ppb	1.5 %
139La (KED)	0.445 ppb	0.7 %
140Ce (KED)	0.939 ppb	0.9 %
141Pr (KED)	0.107 ppb	2.4 %
142Nd (KED)	0.563 ppb	1.4 %
152Sm (KED)	0.081 ppb	3.1 %
153Eu (KED)	0.016 ppb	0.8 %
158Gd (KED)	0.075 ppb	5.2 %
164Dy (KED)	0.052 ppb	4.0 %
165Ho (KED)	0.010 ppb	1.3 %
166Er (KED)	0.022 ppb	1.9 %
169Tm (KED)	0.003 ppb	5.2 %
174Yb (KED)	0.021 ppb	5.3 %
175Lu (KED)	0.003 ppb	3.6 %
205Tl (KED)	0.012 ppb	3.1 %
208Pb (KED)	0.950 ppb	2.8 %
232Th (KED)	0.136 ppb	1.5 %
238U (KED)	0.040 ppb	2.8 %

Category	Concentration average	Intensity average	Intensity RSD
9Be (KED)	0.010 ppb	2 cps	86.6 %
11B (KED)	10.539 ppb	788 cps	9.0 %
24Mg (KED)	661.828 ppb	260,565 cps	0.9 %
27Al (KED)	857.818 ppb	84,907 cps	0.8 %
51V (KED)	1.393 ppb	9,104 cps	0.7 %
52Cr (KED)	2.841 ppb	29,075 cps	1.2 %
55Mn (KED)	19.903 ppb	99,097 cps	0.8 %
56Fe (KED)	719.051 ppb	6,818,413 cps	0.9 %
58Ni (KED)	3.462 ppb	45,365 cps	1.3 %
59Co (KED)	0.373 ppb	7,479 cps	5.0 %

Category	Concentration average	Intensity average	Intensity RSD
63Cu (KED)	10.956 ppb	178,030 cps	1.4 %
64Zn (KED)	156.479 ppb	620,543 cps	0.8 %
69Ga (KED)	1.849 ppb	9,683 cps	2.1 %
75As (KED)	0.576 ppb	683 cps	2.1 %
80Se (KED)	1.011 ppb	1,161 cps	10.9 %
85Rb (KED)	1.971 ppb	9,448 cps	2.0 %
88Sr (KED)	8.076 ppb	55,545 cps	0.9 %
107Ag (KED)	0.025 ppb	1,765 cps	3.5 %
114Cd (KED)	0.074 ppb	1,878 cps	3.6 %
133Cs (KED)	0.133 ppb	3,731 cps	7.7 %
138Ba (KED)	5.339 ppb	229,633 cps	1.4 %
139La (KED)	0.445 ppb	36,925 cps	0.7 %
140Ce (KED)	0.939 ppb	104,956 cps	0.9 %
141Pr (KED)	0.107 ppb	12,387 cps	2.4 %
142Nd (KED)	0.563 ppb	27,042 cps	1.4 %
152Sm (KED)	0.081 ppb	3,663 cps	3.1 %
153Eu (KED)	0.016 ppb	1,497 cps	0.8 %
158Gd (KED)	0.075 ppb	4,786 cps	5.2 %
164Dy (KED)	0.052 ppb	3,748 cps	4.0 %
165Ho (KED)	0.010 ppb	2,419 cps	1.3 %
166Er (KED)	0.022 ppb	2,387 cps	1.6 %
169Tm (KED)	0.003 ppb	1,019 cps	5.1 %
174Yb (KED)	0.021 ppb	2,185 cps	5.3 %
175Lu (KED)	0.003 ppb	469 cps	3.5 %
205Tl (KED)	0.012 ppb	2,639 cps	3.1 %
208Pb (KED)	0.950 ppb	169,203 cps	2.5 %
232Th (KED)	0.136 ppb	43,717 cps	1.5 %
238U (KED)	0.040 ppb	14,792 cps	2.8 %

Sample Summary

Instrument ID: iCAP Q

Analysis index: 20

Analysis name: 027918(178637)jian

Analysis started at: 9/1/2021 4:51:50 PM

User name: WINDOWS-UPCI4ER\Administrator

Category	Concentration average	Concentration RSD
9Be (KED)	0.041 ppb	86.6 %
11B (KED)	4.162 ppb	26.5 %
24Mg (KED)	879.068 ppb	1.5 %
27Al (KED)	1,043.830 ppb	1.7 %
51V (KED)	1.943 ppb	1.9 %
52Cr (KED)	4.362 ppb	1.2 %
55Mn (KED)	27.614 ppb	2.0 %
56Fe (KED)	1,067.236 ppb	1.5 %
58Ni (KED)	5.178 ppb	1.1 %
59Co (KED)	0.501 ppb	0.8 %
63Cu (KED)	12.117 ppb	1.1 %
64Zn (KED)	158.639 ppb	0.4 %
69Ga (KED)	2.709 ppb	0.6 %
75As (KED)	0.629 ppb	3.7 %
80Se (KED)	0.766 ppb	14.9 %
85Rb (KED)	3.319 ppb	2.6 %
88Sr (KED)	11.183 ppb	1.0 %
107Ag (KED)	0.131 ppb	0.3 %
114Cd (KED)	0.132 ppb	5.8 %
133Cs (KED)	0.173 ppb	5.1 %
138Ba (KED)	8.157 ppb	1.0 %
139La (KED)	0.737 ppb	0.4 %
140Ce (KED)	1.576 ppb	1.2 %
141Pr (KED)	0.178 ppb	1.6 %
142Nd (KED)	0.948 ppb	1.3 %
152Sm (KED)	0.135 ppb	5.9 %
153Eu (KED)	0.024 ppb	1.0 %
158Gd (KED)	0.121 ppb	2.2 %
164Dy (KED)	0.083 ppb	0.6 %
165Ho (KED)	0.016 ppb	0.8 %
166Er (KED)	0.038 ppb	6.3 %
169Tm (KED)	0.006 ppb	5.2 %
174Yb (KED)	0.035 ppb	2.9 %
175Lu (KED)	0.005 ppb	5.1 %
205Tl (KED)	0.012 ppb	1.7 %
208Pb (KED)	1.071 ppb	2.0 %
232Th (KED)	0.223 ppb	2.6 %
238U (KED)	0.060 ppb	1.2 %

Category	Concentration average	Intensity average	Intensity RSD
9Be (KED)	0.041 ppb	6 cps	69.3 %
11B (KED)	4.162 ppb	420 cps	15.1 %
24Mg (KED)	879.068 ppb	345,883 cps	1.5 %
27Al (KED)	1,043.830 ppb	103,295 cps	1.7 %
51V (KED)	1.943 ppb	12,696 cps	1.9 %
52Cr (KED)	4.362 ppb	44,492 cps	1.2 %
55Mn (KED)	27.614 ppb	137,401 cps	1.9 %
56Fe (KED)	1,067.236 ppb	10,116,366 cps	1.5 %
58Ni (KED)	5.178 ppb	66,415 cps	1.1 %
59Co (KED)	0.501 ppb	10,034 cps	0.8 %

Category	Concentration average	Intensity average	Intensity RSD
63Cu (KED)	12.117 ppb	195,822 cps	1.0 %
64Zn (KED)	158.639 ppb	628,999 cps	0.4 %
69Ga (KED)	2.709 ppb	13,959 cps	0.6 %
75As (KED)	0.629 ppb	743 cps	3.6 %
80Se (KED)	0.766 ppb	1,080 cps	3.5 %
85Rb (KED)	3.319 ppb	15,858 cps	2.6 %
88Sr (KED)	11.183 ppb	76,808 cps	1.0 %
107Ag (KED)	0.131 ppb	7,039 cps	0.3 %
114Cd (KED)	0.132 ppb	2,956 cps	4.9 %
133Cs (KED)	0.173 ppb	4,835 cps	5.1 %
138Ba (KED)	8.157 ppb	342,814 cps	0.9 %
139La (KED)	0.737 ppb	61,208 cps	0.4 %
140Ce (KED)	1.576 ppb	176,072 cps	1.2 %
141Pr (KED)	0.178 ppb	20,555 cps	1.6 %
142Nd (KED)	0.948 ppb	45,491 cps	1.3 %
152Sm (KED)	0.135 ppb	6,128 cps	5.8 %
153Eu (KED)	0.024 ppb	2,136 cps	1.0 %
158Gd (KED)	0.121 ppb	7,754 cps	2.2 %
164Dy (KED)	0.083 ppb	5,975 cps	0.6 %
165Ho (KED)	0.016 ppb	3,975 cps	0.8 %
166Er (KED)	0.038 ppb	3,723 cps	5.5 %
169Tm (KED)	0.006 ppb	1,712 cps	5.2 %
174Yb (KED)	0.035 ppb	3,762 cps	2.9 %
175Lu (KED)	0.005 ppb	846 cps	5.0 %
205Tl (KED)	0.012 ppb	2,694 cps	1.7 %
208Pb (KED)	1.071 ppb	188,326 cps	1.7 %
232Th (KED)	0.223 ppb	70,878 cps	2.6 %
238U (KED)	0.060 ppb	21,991 cps	1.2 %

Sample Summary

Instrument ID: iCAP Q

Analysis index: 21

Analysis name: 046377(178684)jian

Analysis started at: 9/1/2021 4:55:01 PM

User name: WINDOWS-UPCI4ER\Administrator

Category	Concentration average	Concentration RSD
9Be (KED)	0.010 ppb	346.4 %
11B (KED)	3.141 ppb	25.8 %
24Mg (KED)	636.976 ppb	2.2 %
27Al (KED)	657.621 ppb	2.4 %
51V (KED)	1.196 ppb	4.0 %
52Cr (KED)	2.733 ppb	2.6 %
55Mn (KED)	18.189 ppb	1.4 %
56Fe (KED)	646.309 ppb	2.6 %
58Ni (KED)	3.039 ppb	2.3 %
59Co (KED)	0.392 ppb	2.9 %
63Cu (KED)	10.203 ppb	1.6 %
64Zn (KED)	173.275 ppb	1.6 %
69Ga (KED)	1.665 ppb	3.0 %
75As (KED)	0.458 ppb	3.4 %
80Se (KED)	1.428 ppb	23.6 %
85Rb (KED)	3.397 ppb	3.2 %
88Sr (KED)	7.945 ppb	1.8 %
107Ag (KED)	0.057 ppb	6.0 %
114Cd (KED)	0.081 ppb	4.2 %
133Cs (KED)	0.102 ppb	2.4 %
138Ba (KED)	4.624 ppb	1.9 %
139La (KED)	0.469 ppb	0.6 %
140Ce (KED)	0.987 ppb	0.8 %
141Pr (KED)	0.113 ppb	0.9 %
142Nd (KED)	0.601 ppb	1.2 %
152Sm (KED)	0.085 ppb	2.6 %
153Eu (KED)	0.016 ppb	2.7 %
158Gd (KED)	0.071 ppb	3.0 %
164Dy (KED)	0.050 ppb	2.7 %
165Ho (KED)	0.009 ppb	3.7 %
166Er (KED)	0.019 ppb	7.0 %
169Tm (KED)	0.003 ppb	9.3 %
174Yb (KED)	0.020 ppb	2.3 %
175Lu (KED)	0.003 ppb	7.4 %
205Tl (KED)	0.012 ppb	1.3 %
208Pb (KED)	0.674 ppb	1.6 %
232Th (KED)	0.114 ppb	0.7 %
238U (KED)	0.032 ppb	0.8 %

Category	Concentration average	Intensity average	Intensity RSD
9Be (KED)	0.010 ppb	2 cps	173.2 %
11B (KED)	3.141 ppb	361 cps	12.9 %
24Mg (KED)	636.976 ppb	250,804 cps	2.2 %
27Al (KED)	657.621 ppb	65,116 cps	2.4 %
51V (KED)	1.196 ppb	7,819 cps	4.0 %
52Cr (KED)	2.733 ppb	27,972 cps	2.5 %
55Mn (KED)	18.189 ppb	90,587 cps	1.4 %
56Fe (KED)	646.309 ppb	6,129,415 cps	2.6 %
58Ni (KED)	3.039 ppb	40,178 cps	2.2 %
59Co (KED)	0.392 ppb	7,868 cps	2.9 %

Category	Concentration average	Intensity average	Intensity RSD
63Cu (KED)	10.203 ppb	166,488 cps	1.5 %
64Zn (KED)	173.275 ppb	686,290 cps	1.5 %
69Ga (KED)	1.665 ppb	8,766 cps	2.9 %
75As (KED)	0.458 ppb	550 cps	3.2 %
80Se (KED)	1.428 ppb	1,299 cps	8.6 %
85Rb (KED)	3.397 ppb	16,229 cps	3.2 %
88Sr (KED)	7.945 ppb	54,645 cps	1.8 %
107Ag (KED)	0.057 ppb	3,348 cps	5.0 %
114Cd (KED)	0.081 ppb	2,008 cps	3.2 %
133Cs (KED)	0.102 ppb	2,853 cps	2.4 %
138Ba (KED)	4.624 ppb	200,918 cps	1.8 %
139La (KED)	0.469 ppb	38,975 cps	0.6 %
140Ce (KED)	0.987 ppb	110,301 cps	0.8 %
141Pr (KED)	0.113 ppb	13,143 cps	0.9 %
142Nd (KED)	0.601 ppb	28,868 cps	1.2 %
152Sm (KED)	0.085 ppb	3,842 cps	2.5 %
153Eu (KED)	0.016 ppb	1,476 cps	2.7 %
158Gd (KED)	0.071 ppb	4,582 cps	3.0 %
164Dy (KED)	0.050 ppb	3,588 cps	2.7 %
165Ho (KED)	0.009 ppb	2,297 cps	3.7 %
166Er (KED)	0.019 ppb	2,102 cps	5.5 %
169Tm (KED)	0.003 ppb	1,001 cps	9.1 %
174Yb (KED)	0.020 ppb	2,078 cps	2.3 %
175Lu (KED)	0.003 ppb	459 cps	7.3 %
205Tl (KED)	0.012 ppb	2,700 cps	1.3 %
208Pb (KED)	0.674 ppb	125,855 cps	1.3 %
232Th (KED)	0.114 ppb	36,893 cps	0.7 %
238U (KED)	0.032 ppb	11,987 cps	0.8 %

Sample Summary

Instrument ID: iCAP Q

Analysis index: 22

Analysis name: 046002(178603)jian

Analysis started at: 9/1/2021 4:58:17 PM

User name: WINDOWS-UPCI4ER\Administrator

Category	Concentration average	Concentration RSD
9Be (KED)	0.000 ppb	1,567,880,022,109,980,000.0 %
11B (KED)	5.414 ppb	16.2 %
24Mg (KED)	419.357 ppb	0.9 %
27Al (KED)	401.693 ppb	1.4 %
51V (KED)	0.722 ppb	0.8 %
52Cr (KED)	3.886 ppb	1.6 %
55Mn (KED)	10.464 ppb	0.6 %
56Fe (KED)	397.314 ppb	0.7 %
58Ni (KED)	2.674 ppb	1.4 %
59Co (KED)	0.217 ppb	3.3 %
63Cu (KED)	14.923 ppb	0.4 %
64Zn (KED)	173.729 ppb	0.8 %
69Ga (KED)	1.282 ppb	3.1 %
75As (KED)	0.708 ppb	3.0 %
80Se (KED)	0.920 ppb	22.8 %
85Rb (KED)	1.942 ppb	3.4 %
88Sr (KED)	4.749 ppb	1.8 %
107Ag (KED)	0.106 ppb	4.9 %
114Cd (KED)	0.073 ppb	1.4 %
133Cs (KED)	0.061 ppb	5.3 %
138Ba (KED)	3.648 ppb	1.7 %
139La (KED)	0.287 ppb	1.6 %
140Ce (KED)	0.595 ppb	1.0 %
141Pr (KED)	0.067 ppb	1.2 %
142Nd (KED)	0.361 ppb	4.4 %
152Sm (KED)	0.053 ppb	2.6 %
153Eu (KED)	0.009 ppb	5.3 %
158Gd (KED)	0.045 ppb	2.6 %
164Dy (KED)	0.031 ppb	5.8 %
165Ho (KED)	0.006 ppb	2.8 %
166Er (KED)	0.010 ppb	7.3 %
169Tm (KED)	0.002 ppb	6.2 %
174Yb (KED)	0.012 ppb	2.0 %
175Lu (KED)	0.002 ppb	13.5 %
205Tl (KED)	0.008 ppb	2.6 %
208Pb (KED)	1.421 ppb	3.8 %
232Th (KED)	0.064 ppb	3.6 %
238U (KED)	0.023 ppb	3.7 %

Category	Concentration average	Intensity average	Intensity RSD
9Be (KED)	0.000 ppb	1 cps	173.2 %
11B (KED)	5.414 ppb	492 cps	10.3 %
24Mg (KED)	419.357 ppb	165,338 cps	0.9 %
27Al (KED)	401.693 ppb	39,817 cps	1.3 %
51V (KED)	0.722 ppb	4,726 cps	0.8 %
52Cr (KED)	3.886 ppb	39,667 cps	1.6 %
55Mn (KED)	10.464 ppb	52,217 cps	0.6 %
56Fe (KED)	397.314 ppb	3,770,963 cps	0.7 %
58Ni (KED)	2.674 ppb	35,703 cps	1.3 %
59Co (KED)	0.217 ppb	4,352 cps	3.3 %

Category	Concentration average	Intensity average	Intensity RSD
63Cu (KED)	14.923 ppb	238,828 cps	0.4 %
64Zn (KED)	173.729 ppb	688,066 cps	0.8 %
69Ga (KED)	1.282 ppb	6,862 cps	2.9 %
75As (KED)	0.708 ppb	832 cps	2.9 %
80Se (KED)	0.920 ppb	1,131 cps	6.1 %
85Rb (KED)	1.942 ppb	9,308 cps	3.4 %
88Sr (KED)	4.749 ppb	32,776 cps	1.8 %
107Ag (KED)	0.106 ppb	5,781 cps	4.4 %
114Cd (KED)	0.073 ppb	1,845 cps	1.1 %
133Cs (KED)	0.061 ppb	1,735 cps	5.2 %
138Ba (KED)	3.648 ppb	161,691 cps	1.6 %
139La (KED)	0.287 ppb	23,829 cps	1.6 %
140Ce (KED)	0.595 ppb	66,603 cps	1.0 %
141Pr (KED)	0.067 ppb	7,766 cps	1.2 %
142Nd (KED)	0.361 ppb	17,334 cps	4.4 %
152Sm (KED)	0.053 ppb	2,428 cps	2.6 %
153Eu (KED)	0.009 ppb	844 cps	5.2 %
158Gd (KED)	0.045 ppb	2,888 cps	2.6 %
164Dy (KED)	0.031 ppb	2,264 cps	5.8 %
165Ho (KED)	0.006 ppb	1,459 cps	2.8 %
166Er (KED)	0.010 ppb	1,292 cps	4.8 %
169Tm (KED)	0.002 ppb	593 cps	5.9 %
174Yb (KED)	0.012 ppb	1,262 cps	2.0 %
175Lu (KED)	0.002 ppb	307 cps	13.2 %
205Tl (KED)	0.008 ppb	1,881 cps	2.6 %
208Pb (KED)	1.421 ppb	243,297 cps	3.4 %
232Th (KED)	0.064 ppb	21,298 cps	3.4 %
238U (KED)	0.023 ppb	8,595 cps	3.6 %

Sample Summary

Instrument ID: iCAP Q

Analysis index: 23

Analysis name: 024066(178585)jian

Analysis started at: 9/1/2021 5:01:33 PM

User name: WINDOWS-UPCI4ER\Administrator

Category	Concentration average	Concentration RSD
9Be (KED)	0.010 ppb	346.4 %
11B (KED)	6.859 ppb	15.7 %
24Mg (KED)	1,114.984 ppb	0.9 %
27Al (KED)	1,377.484 ppb	1.4 %
51V (KED)	2.605 ppb	3.7 %
52Cr (KED)	5.871 ppb	0.1 %
55Mn (KED)	34.072 ppb	0.2 %
56Fe (KED)	1,407.997 ppb	1.2 %
58Ni (KED)	6.191 ppb	0.8 %
59Co (KED)	0.709 ppb	3.5 %
63Cu (KED)	11.689 ppb	1.8 %
64Zn (KED)	160.001 ppb	0.8 %
69Ga (KED)	2.928 ppb	2.4 %
75As (KED)	0.838 ppb	7.1 %
80Se (KED)	1.817 ppb	16.8 %
85Rb (KED)	3.614 ppb	1.3 %
88Sr (KED)	12.703 ppb	2.2 %
107Ag (KED)	0.046 ppb	6.9 %
114Cd (KED)	0.126 ppb	3.6 %
133Cs (KED)	0.237 ppb	0.7 %
138Ba (KED)	8.076 ppb	2.5 %
139La (KED)	0.963 ppb	1.1 %
140Ce (KED)	2.059 ppb	1.2 %
141Pr (KED)	0.238 ppb	1.8 %
142Nd (KED)	1.253 ppb	3.2 %
152Sm (KED)	0.171 ppb	0.7 %
153Eu (KED)	0.032 ppb	3.7 %
158Gd (KED)	0.154 ppb	2.0 %
164Dy (KED)	0.106 ppb	1.2 %
165Ho (KED)	0.021 ppb	4.2 %
166Er (KED)	0.048 ppb	4.3 %
169Tm (KED)	0.007 ppb	4.2 %
174Yb (KED)	0.044 ppb	2.2 %
175Lu (KED)	0.006 ppb	8.0 %
205Tl (KED)	0.015 ppb	5.8 %
208Pb (KED)	1.579 ppb	0.6 %
232Th (KED)	0.247 ppb	1.1 %
238U (KED)	0.064 ppb	2.9 %

Category	Concentration average	Intensity average	Intensity RSD
9Be (KED)	0.010 ppb	2 cps	173.2 %
11B (KED)	6.859 ppb	576 cps	10.8 %
24Mg (KED)	1,114.984 ppb	438,535 cps	0.9 %
27Al (KED)	1,377.484 ppb	136,278 cps	1.4 %
51V (KED)	2.605 ppb	17,023 cps	3.7 %
52Cr (KED)	5.871 ppb	59,796 cps	0.1 %
55Mn (KED)	34.072 ppb	169,475 cps	0.2 %
56Fe (KED)	1,407.997 ppb	13,344,012 cps	1.2 %
58Ni (KED)	6.191 ppb	78,835 cps	0.8 %
59Co (KED)	0.709 ppb	14,203 cps	3.5 %

Category	Concentration average	Intensity average	Intensity RSD
63Cu (KED)	11.689 ppb	189,252 cps	1.7 %
64Zn (KED)	160.001 ppb	634,327 cps	0.8 %
69Ga (KED)	2.928 ppb	15,045 cps	2.3 %
75As (KED)	0.838 ppb	980 cps	6.8 %
80Se (KED)	1.817 ppb	1,428 cps	7.1 %
85Rb (KED)	3.614 ppb	17,261 cps	1.3 %
88Sr (KED)	12.703 ppb	87,205 cps	2.2 %
107Ag (KED)	0.046 ppb	2,826 cps	5.6 %
114Cd (KED)	0.126 ppb	2,837 cps	3.0 %
133Cs (KED)	0.237 ppb	6,643 cps	0.7 %
138Ba (KED)	8.076 ppb	339,584 cps	2.4 %
139La (KED)	0.963 ppb	79,897 cps	1.1 %
140Ce (KED)	2.059 ppb	229,937 cps	1.2 %
141Pr (KED)	0.238 ppb	27,514 cps	1.8 %
142Nd (KED)	1.253 ppb	60,089 cps	3.2 %
152Sm (KED)	0.171 ppb	7,740 cps	0.7 %
153Eu (KED)	0.032 ppb	2,890 cps	3.7 %
158Gd (KED)	0.154 ppb	9,834 cps	2.0 %
164Dy (KED)	0.106 ppb	7,602 cps	1.2 %
165Ho (KED)	0.021 ppb	5,196 cps	4.2 %
166Er (KED)	0.048 ppb	4,671 cps	3.9 %
169Tm (KED)	0.007 ppb	2,027 cps	4.2 %
174Yb (KED)	0.044 ppb	4,651 cps	2.2 %
175Lu (KED)	0.006 ppb	1,038 cps	7.9 %
205Tl (KED)	0.015 ppb	3,324 cps	5.8 %
208Pb (KED)	1.579 ppb	268,221 cps	0.6 %
232Th (KED)	0.247 ppb	78,403 cps	1.1 %
238U (KED)	0.064 ppb	23,461 cps	2.9 %

Sample Summary

Instrument ID: iCAP Q

Analysis index: 24

Analysis name: 015366(178647)jian

Analysis started at: 9/1/2021 5:04:50 PM

User name: WINDOWS-UPCI4ER\Administrator

Category	Concentration average	Concentration RSD
9Be (KED)	0.020 ppb	150.0 %
11B (KED)	3.584 ppb	27.1 %
24Mg (KED)	507.006 ppb	0.4 %
27Al (KED)	599.874 ppb	0.9 %
51V (KED)	1.063 ppb	3.2 %
52Cr (KED)	3.973 ppb	2.3 %
55Mn (KED)	15.462 ppb	1.9 %
56Fe (KED)	535.750 ppb	2.1 %
58Ni (KED)	2.683 ppb	0.7 %
59Co (KED)	0.292 ppb	1.8 %
63Cu (KED)	10.606 ppb	0.8 %
64Zn (KED)	172.178 ppb	0.6 %
69Ga (KED)	1.346 ppb	4.4 %
75As (KED)	0.542 ppb	3.0 %
80Se (KED)	1.035 ppb	26.3 %
85Rb (KED)	1.535 ppb	2.2 %
88Sr (KED)	6.149 ppb	0.5 %
107Ag (KED)	0.048 ppb	2.1 %
114Cd (KED)	0.089 ppb	0.3 %
133Cs (KED)	0.093 ppb	7.2 %
138Ba (KED)	3.888 ppb	2.1 %
139La (KED)	0.344 ppb	2.1 %
140Ce (KED)	0.713 ppb	1.4 %
141Pr (KED)	0.082 ppb	4.1 %
142Nd (KED)	0.435 ppb	1.5 %
152Sm (KED)	0.062 ppb	8.1 %
153Eu (KED)	0.013 ppb	7.2 %
158Gd (KED)	0.057 ppb	2.0 %
164Dy (KED)	0.042 ppb	2.1 %
165Ho (KED)	0.008 ppb	4.6 %
166Er (KED)	0.015 ppb	3.7 %
169Tm (KED)	0.003 ppb	7.7 %
174Yb (KED)	0.016 ppb	2.7 %
175Lu (KED)	0.002 ppb	8.3 %
205Tl (KED)	0.011 ppb	4.3 %
208Pb (KED)	0.721 ppb	1.3 %
232Th (KED)	0.098 ppb	2.3 %
238U (KED)	0.028 ppb	0.4 %

Category	Concentration average	Intensity average	Intensity RSD
9Be (KED)	0.020 ppb	3 cps	100.0 %
11B (KED)	3.584 ppb	387 cps	14.5 %
24Mg (KED)	507.006 ppb	199,761 cps	0.4 %
27Al (KED)	599.874 ppb	59,408 cps	0.9 %
51V (KED)	1.063 ppb	6,951 cps	3.2 %
52Cr (KED)	3.973 ppb	40,550 cps	2.3 %
55Mn (KED)	15.462 ppb	77,042 cps	1.8 %
56Fe (KED)	535.750 ppb	5,082,214 cps	2.1 %
58Ni (KED)	2.683 ppb	35,817 cps	0.6 %
59Co (KED)	0.292 ppb	5,854 cps	1.7 %

Category	Concentration average	Intensity average	Intensity RSD
63Cu (KED)	10.606 ppb	172,659 cps	0.8 %
64Zn (KED)	172.178 ppb	681,995 cps	0.6 %
69Ga (KED)	1.346 ppb	7,183 cps	4.1 %
75As (KED)	0.542 ppb	644 cps	2.8 %
80Se (KED)	1.035 ppb	1,169 cps	7.7 %
85Rb (KED)	1.535 ppb	7,376 cps	2.2 %
88Sr (KED)	6.149 ppb	42,358 cps	0.5 %
107Ag (KED)	0.048 ppb	2,936 cps	1.7 %
114Cd (KED)	0.089 ppb	2,150 cps	0.3 %
133Cs (KED)	0.093 ppb	2,626 cps	7.1 %
138Ba (KED)	3.888 ppb	171,333 cps	1.9 %
139La (KED)	0.344 ppb	28,544 cps	2.1 %
140Ce (KED)	0.713 ppb	79,674 cps	1.4 %
141Pr (KED)	0.082 ppb	9,491 cps	4.1 %
142Nd (KED)	0.435 ppb	20,911 cps	1.5 %
152Sm (KED)	0.062 ppb	2,805 cps	8.0 %
153Eu (KED)	0.013 ppb	1,176 cps	7.1 %
158Gd (KED)	0.057 ppb	3,667 cps	2.0 %
164Dy (KED)	0.042 ppb	2,994 cps	2.1 %
165Ho (KED)	0.008 ppb	1,982 cps	4.6 %
166Er (KED)	0.015 ppb	1,753 cps	2.7 %
169Tm (KED)	0.003 ppb	778 cps	7.5 %
174Yb (KED)	0.016 ppb	1,733 cps	2.7 %
175Lu (KED)	0.002 ppb	348 cps	8.2 %
205Tl (KED)	0.011 ppb	2,380 cps	4.3 %
208Pb (KED)	0.721 ppb	133,121 cps	1.1 %
232Th (KED)	0.098 ppb	31,958 cps	2.2 %
238U (KED)	0.028 ppb	10,329 cps	0.4 %

Sample Summary

Instrument ID: iCAP Q

Analysis index: 25

Analysis name: 04380(178516)jian

Analysis started at: 9/1/2021 5:07:51 PM

User name: WINDOWS-UPCI4ER\Administrator

Category	Concentration average	Concentration RSD
9Be (KED)	0.041 ppb	86.6 %
11B (KED)	5.800 ppb	17.0 %
24Mg (KED)	1,105.846 ppb	1.1 %
27Al (KED)	1,307.351 ppb	1.1 %
51V (KED)	2.526 ppb	1.6 %
52Cr (KED)	3.859 ppb	1.2 %
55Mn (KED)	34.683 ppb	0.5 %
56Fe (KED)	1,332.082 ppb	0.7 %
58Ni (KED)	6.187 ppb	1.1 %
59Co (KED)	0.658 ppb	2.3 %
63Cu (KED)	13.033 ppb	1.3 %
64Zn (KED)	164.396 ppb	1.2 %
69Ga (KED)	2.816 ppb	2.2 %
75As (KED)	0.796 ppb	1.3 %
80Se (KED)	0.930 ppb	26.0 %
85Rb (KED)	2.935 ppb	1.1 %
88Sr (KED)	13.242 ppb	0.6 %
107Ag (KED)	0.023 ppb	9.1 %
114Cd (KED)	0.071 ppb	1.0 %
133Cs (KED)	0.249 ppb	0.7 %
138Ba (KED)	8.415 ppb	2.0 %
139La (KED)	1.062 ppb	0.7 %
140Ce (KED)	2.143 ppb	0.7 %
141Pr (KED)	0.253 ppb	1.4 %
142Nd (KED)	1.315 ppb	0.9 %
152Sm (KED)	0.185 ppb	2.1 %
153Eu (KED)	0.032 ppb	1.2 %
158Gd (KED)	0.160 ppb	2.2 %
164Dy (KED)	0.113 ppb	3.8 %
165Ho (KED)	0.021 ppb	2.2 %
166Er (KED)	0.050 ppb	7.6 %
169Tm (KED)	0.007 ppb	3.7 %
174Yb (KED)	0.043 ppb	1.2 %
175Lu (KED)	0.006 ppb	5.7 %
205Tl (KED)	0.017 ppb	1.8 %
208Pb (KED)	1.086 ppb	1.9 %
232Th (KED)	0.328 ppb	1.6 %
238U (KED)	0.069 ppb	1.4 %

Category	Concentration average	Intensity average	Intensity RSD
9Be (KED)	0.041 ppb	6 cps	69.3 %
11B (KED)	5.800 ppb	514 cps	11.1 %
24Mg (KED)	1,105.846 ppb	434,946 cps	1.1 %
27Al (KED)	1,307.351 ppb	129,345 cps	1.1 %
51V (KED)	2.526 ppb	16,506 cps	1.6 %
52Cr (KED)	3.859 ppb	39,397 cps	1.2 %
55Mn (KED)	34.683 ppb	172,514 cps	0.5 %
56Fe (KED)	1,332.082 ppb	12,624,949 cps	0.7 %
58Ni (KED)	6.187 ppb	78,780 cps	1.1 %
59Co (KED)	0.658 ppb	13,181 cps	2.3 %

Category	Concentration average	Intensity average	Intensity RSD
63Cu (KED)	13.033 ppb	209,856 cps	1.2 %
64Zn (KED)	164.396 ppb	651,533 cps	1.2 %
69Ga (KED)	2.816 ppb	14,487 cps	2.1 %
75As (KED)	0.796 ppb	932 cps	1.3 %
80Se (KED)	0.930 ppb	1,134 cps	7.1 %
85Rb (KED)	2.935 ppb	14,030 cps	1.1 %
88Sr (KED)	13.242 ppb	90,897 cps	0.6 %
107Ag (KED)	0.023 ppb	1,671 cps	6.2 %
114Cd (KED)	0.071 ppb	1,818 cps	0.7 %
133Cs (KED)	0.249 ppb	6,956 cps	0.7 %
138Ba (KED)	8.415 ppb	353,201 cps	1.9 %
139La (KED)	1.062 ppb	88,149 cps	0.7 %
140Ce (KED)	2.143 ppb	239,244 cps	0.7 %
141Pr (KED)	0.253 ppb	29,309 cps	1.4 %
142Nd (KED)	1.315 ppb	63,080 cps	0.9 %
152Sm (KED)	0.185 ppb	8,391 cps	2.1 %
153Eu (KED)	0.032 ppb	2,915 cps	1.2 %
158Gd (KED)	0.160 ppb	10,246 cps	2.2 %
164Dy (KED)	0.113 ppb	8,089 cps	3.7 %
165Ho (KED)	0.021 ppb	5,271 cps	2.2 %
166Er (KED)	0.050 ppb	4,810 cps	6.9 %
169Tm (KED)	0.007 ppb	2,099 cps	3.6 %
174Yb (KED)	0.043 ppb	4,612 cps	1.2 %
175Lu (KED)	0.006 ppb	1,010 cps	5.6 %
205Tl (KED)	0.017 ppb	3,825 cps	1.8 %
208Pb (KED)	1.086 ppb	190,645 cps	1.7 %
232Th (KED)	0.328 ppb	103,596 cps	1.6 %
238U (KED)	0.069 ppb	25,609 cps	1.4 %

Sample Summary

Instrument ID: iCAP Q

Analysis index: 26

Analysis name: 034758(179419)jian

Analysis started at: 9/1/2021 5:11:01 PM

User name: WINDOWS-UPCI4ER\Administrator

Category	Concentration average	Concentration RSD
9Be (KED)	0.020 ppb	150.0 %
11B (KED)	3.834 ppb	3.1 %
24Mg (KED)	543.882 ppb	1.1 %
27Al (KED)	646.015 ppb	1.9 %
51V (KED)	1.135 ppb	2.4 %
52Cr (KED)	4.932 ppb	2.0 %
55Mn (KED)	16.846 ppb	2.4 %
56Fe (KED)	598.065 ppb	1.3 %
58Ni (KED)	3.120 ppb	1.1 %
59Co (KED)	0.289 ppb	2.0 %
63Cu (KED)	10.247 ppb	0.1 %
64Zn (KED)	170.966 ppb	0.5 %
69Ga (KED)	1.405 ppb	1.0 %
75As (KED)	0.397 ppb	7.8 %
80Se (KED)	1.072 ppb	15.8 %
85Rb (KED)	1.908 ppb	6.2 %
88Sr (KED)	6.908 ppb	0.5 %
107Ag (KED)	0.015 ppb	6.1 %
114Cd (KED)	0.070 ppb	7.3 %
133Cs (KED)	0.105 ppb	4.9 %
138Ba (KED)	4.306 ppb	0.6 %
139La (KED)	0.388 ppb	2.1 %
140Ce (KED)	0.812 ppb	1.1 %
141Pr (KED)	0.095 ppb	1.1 %
142Nd (KED)	0.508 ppb	2.6 %
152Sm (KED)	0.072 ppb	3.9 %
153Eu (KED)	0.015 ppb	4.1 %
158Gd (KED)	0.066 ppb	3.3 %
164Dy (KED)	0.046 ppb	5.6 %
165Ho (KED)	0.009 ppb	9.8 %
166Er (KED)	0.020 ppb	2.6 %
169Tm (KED)	0.003 ppb	6.7 %
174Yb (KED)	0.019 ppb	3.5 %
175Lu (KED)	0.002 ppb	7.5 %
205Tl (KED)	0.011 ppb	4.9 %
208Pb (KED)	0.771 ppb	0.7 %
232Th (KED)	0.111 ppb	2.7 %
238U (KED)	0.031 ppb	2.3 %

Category	Concentration average	Intensity average	Intensity RSD
9Be (KED)	0.020 ppb	3 cps	100.0 %
11B (KED)	3.834 ppb	401 cps	1.7 %
24Mg (KED)	543.882 ppb	214,243 cps	1.1 %
27Al (KED)	646.015 ppb	63,969 cps	1.9 %
51V (KED)	1.135 ppb	7,423 cps	2.4 %
52Cr (KED)	4.932 ppb	50,273 cps	2.0 %
55Mn (KED)	16.846 ppb	83,917 cps	2.4 %
56Fe (KED)	598.065 ppb	5,672,452 cps	1.3 %
58Ni (KED)	3.120 ppb	41,180 cps	1.0 %
59Co (KED)	0.289 ppb	5,800 cps	2.0 %

Category	Concentration average	Intensity average	Intensity RSD
63Cu (KED)	10.247 ppb	167,164 cps	0.1 %
64Zn (KED)	170.966 ppb	677,250 cps	0.5 %
69Ga (KED)	1.405 ppb	7,476 cps	0.9 %
75As (KED)	0.397 ppb	480 cps	7.3 %
80Se (KED)	1.072 ppb	1,181 cps	4.7 %
85Rb (KED)	1.908 ppb	9,147 cps	6.2 %
88Sr (KED)	6.908 ppb	47,555 cps	0.5 %
107Ag (KED)	0.015 ppb	1,291 cps	3.6 %
114Cd (KED)	0.070 ppb	1,797 cps	5.3 %
133Cs (KED)	0.105 ppb	2,955 cps	4.8 %
138Ba (KED)	4.306 ppb	188,122 cps	0.5 %
139La (KED)	0.388 ppb	32,199 cps	2.1 %
140Ce (KED)	0.812 ppb	90,775 cps	1.1 %
141Pr (KED)	0.095 ppb	10,987 cps	1.1 %
142Nd (KED)	0.508 ppb	24,397 cps	2.6 %
152Sm (KED)	0.072 ppb	3,288 cps	3.9 %
153Eu (KED)	0.015 ppb	1,340 cps	4.0 %
158Gd (KED)	0.066 ppb	4,210 cps	3.3 %
164Dy (KED)	0.046 ppb	3,287 cps	5.6 %
165Ho (KED)	0.009 ppb	2,140 cps	9.7 %
166Er (KED)	0.020 ppb	2,161 cps	2.1 %
169Tm (KED)	0.003 ppb	904 cps	6.6 %
174Yb (KED)	0.019 ppb	2,047 cps	3.5 %
175Lu (KED)	0.002 ppb	428 cps	7.4 %
205Tl (KED)	0.011 ppb	2,391 cps	4.8 %
208Pb (KED)	0.771 ppb	141,080 cps	0.6 %
232Th (KED)	0.111 ppb	35,984 cps	2.6 %
238U (KED)	0.031 ppb	11,434 cps	2.2 %